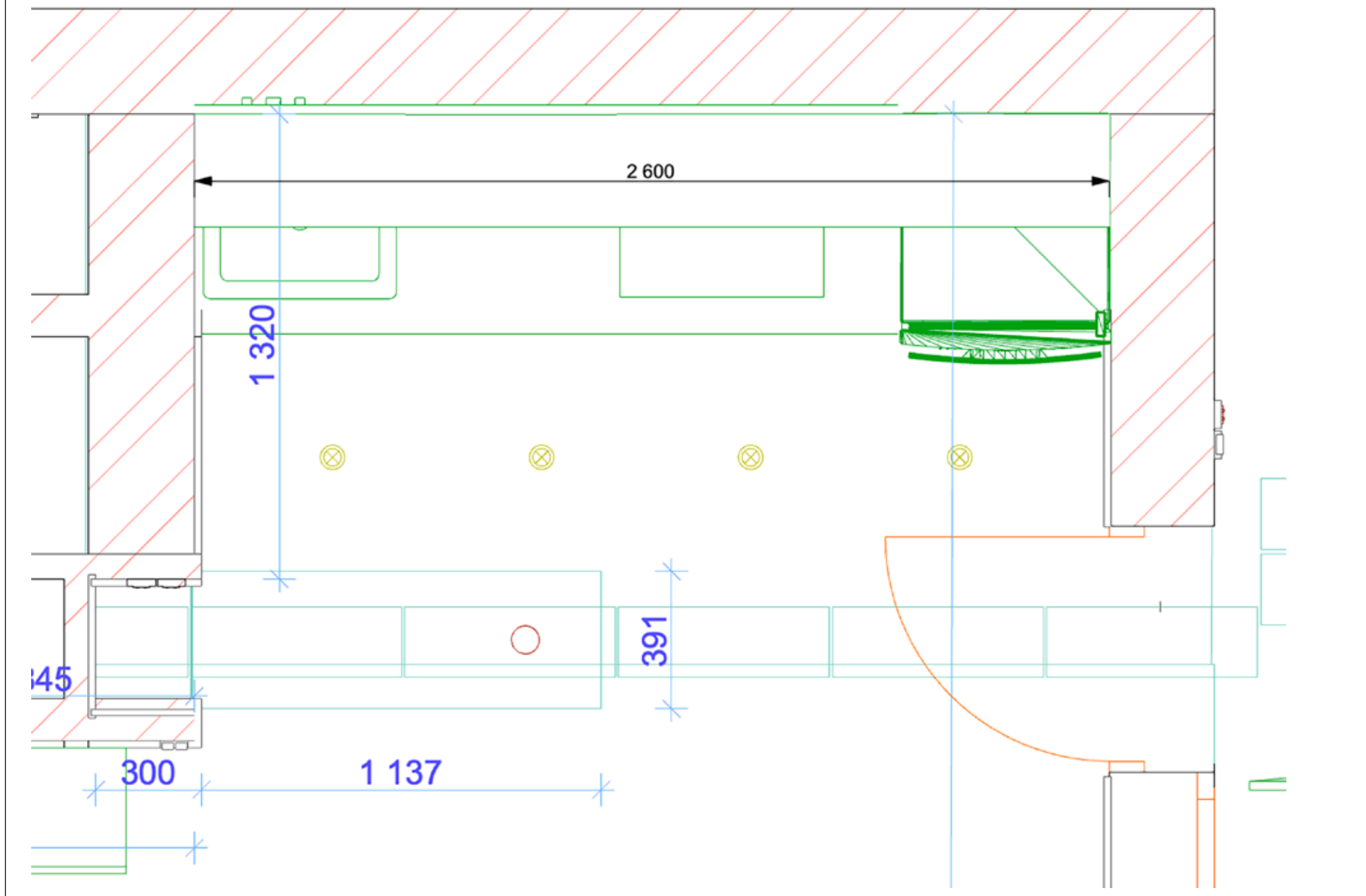


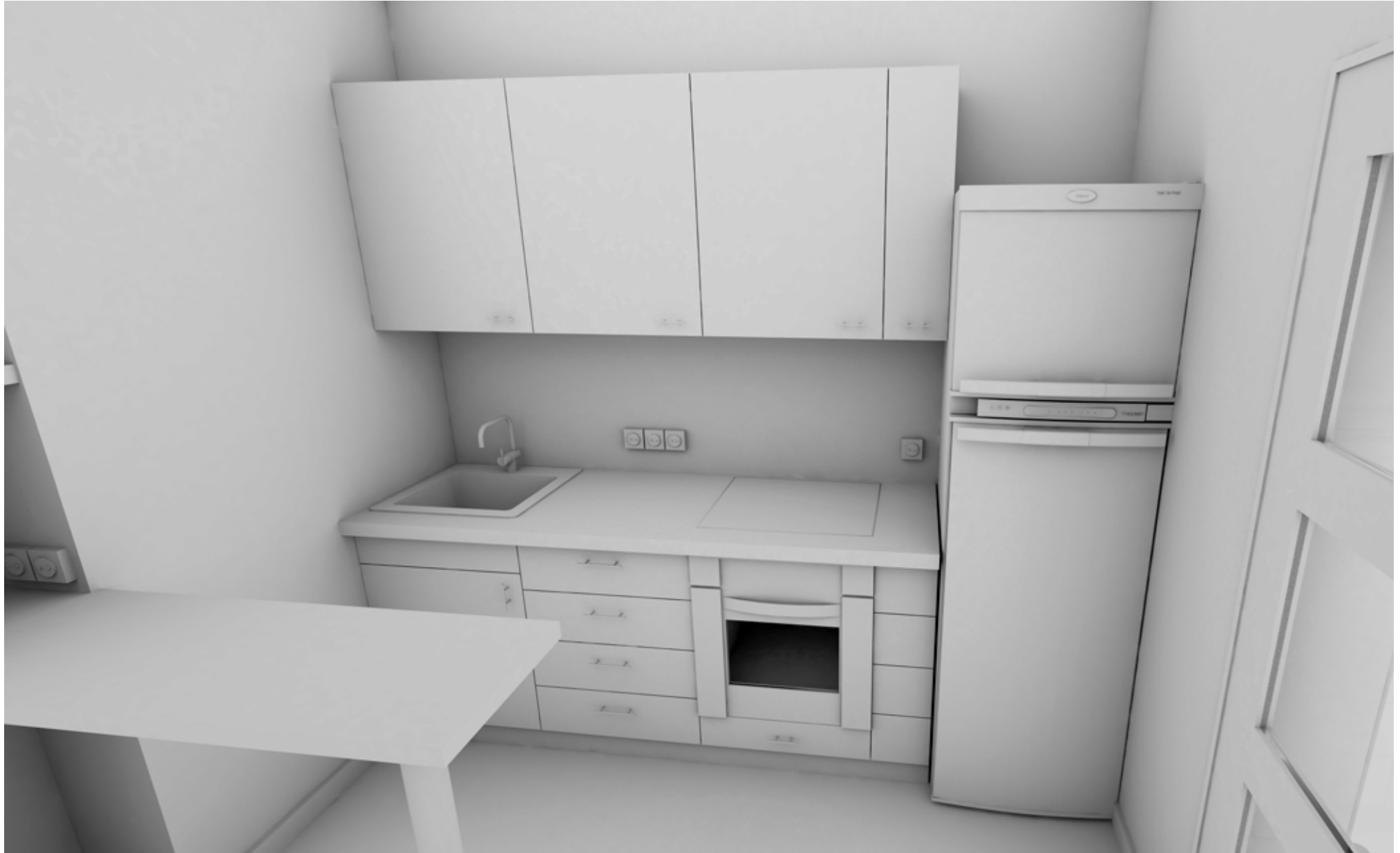


Эскизный проект студии

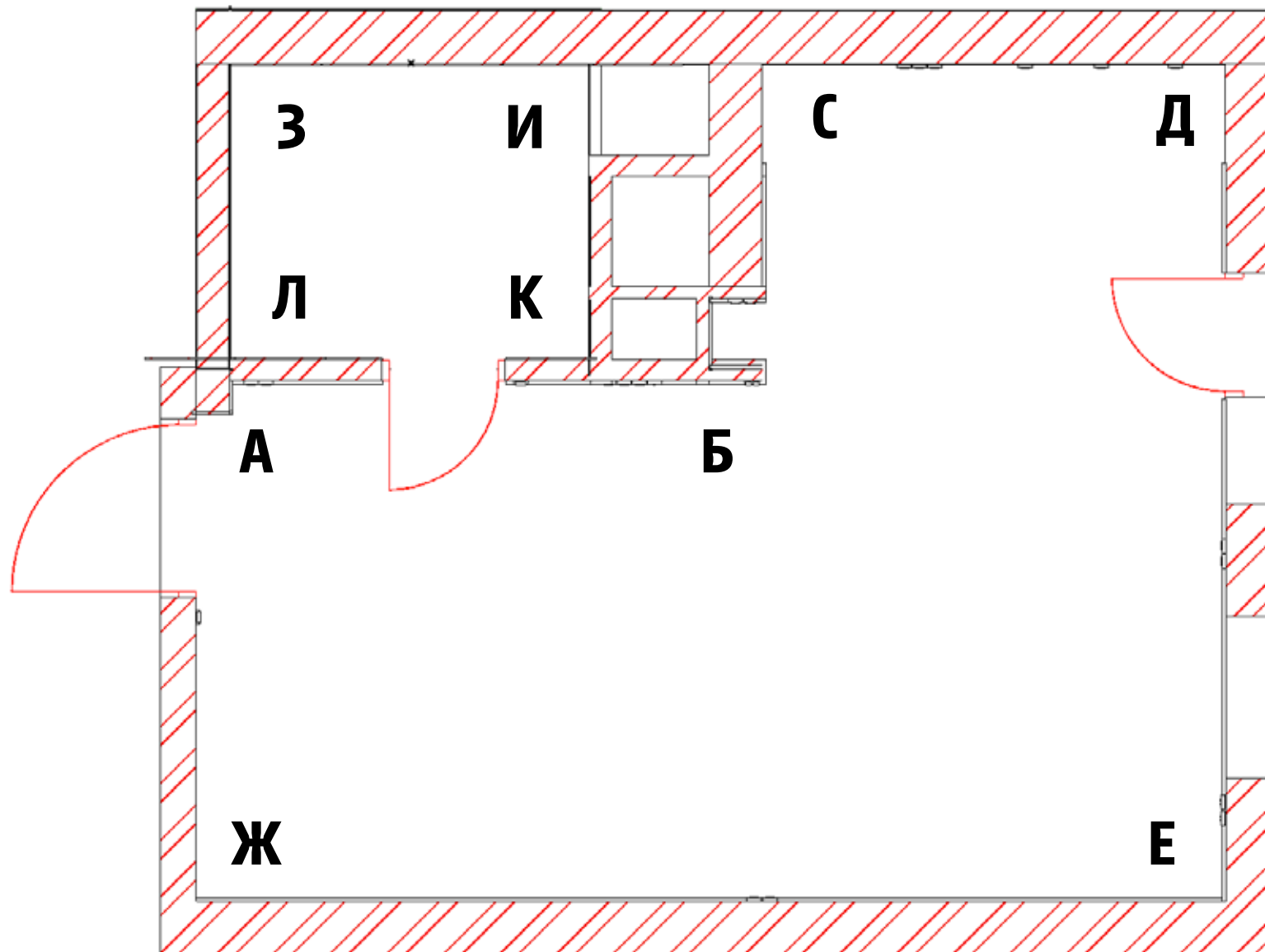
# Размеры кухни

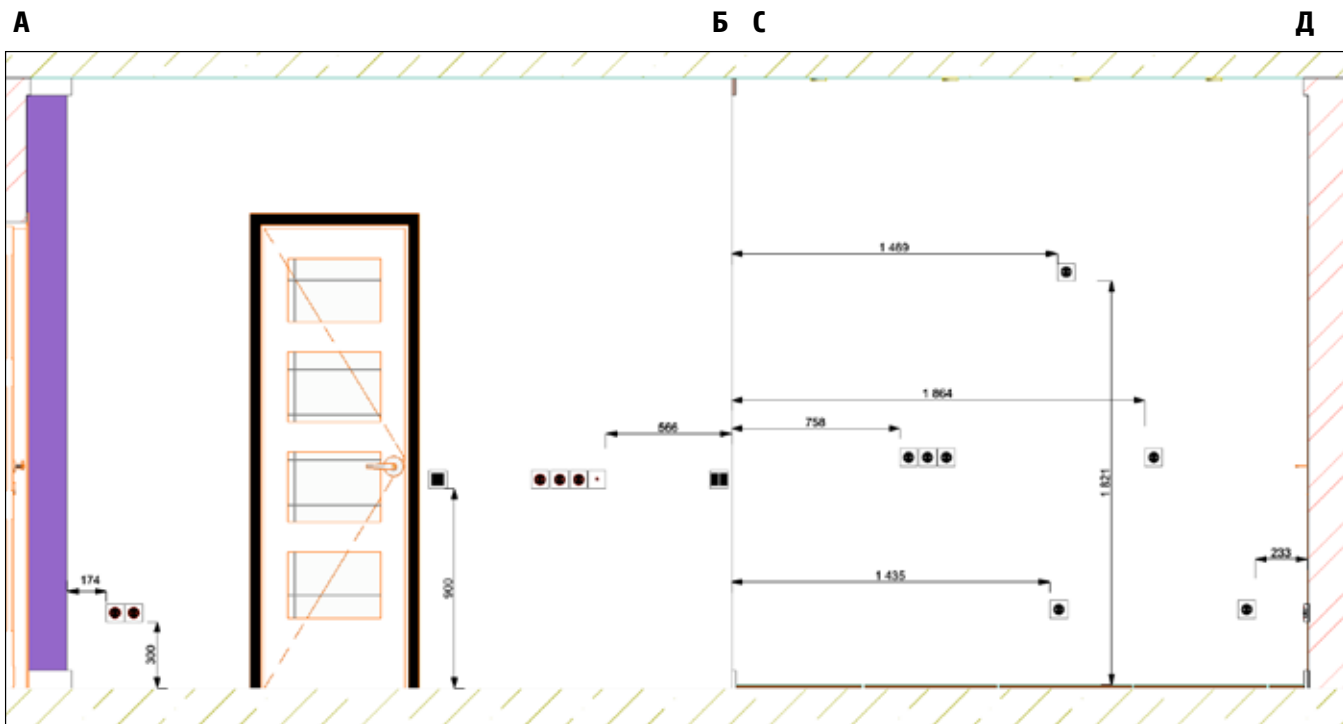


## ВИД КУХНИ

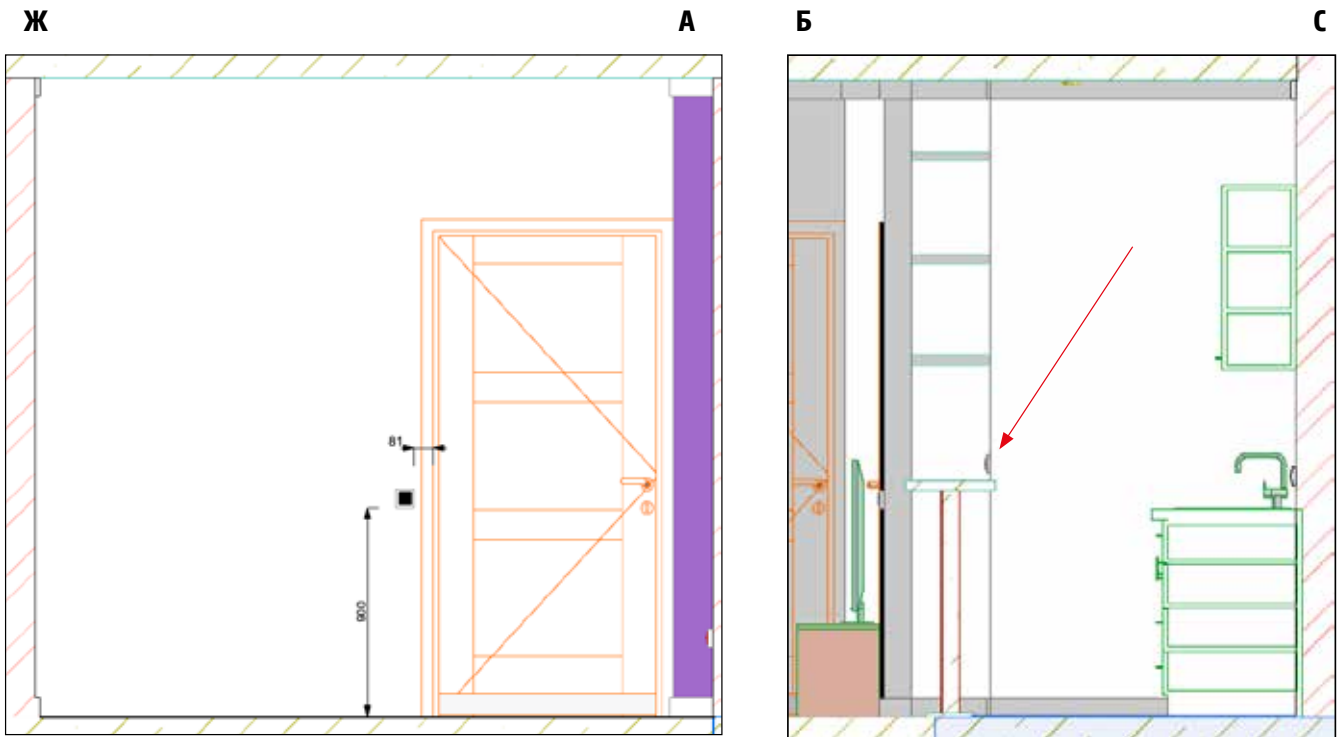


# Схема разверток стен





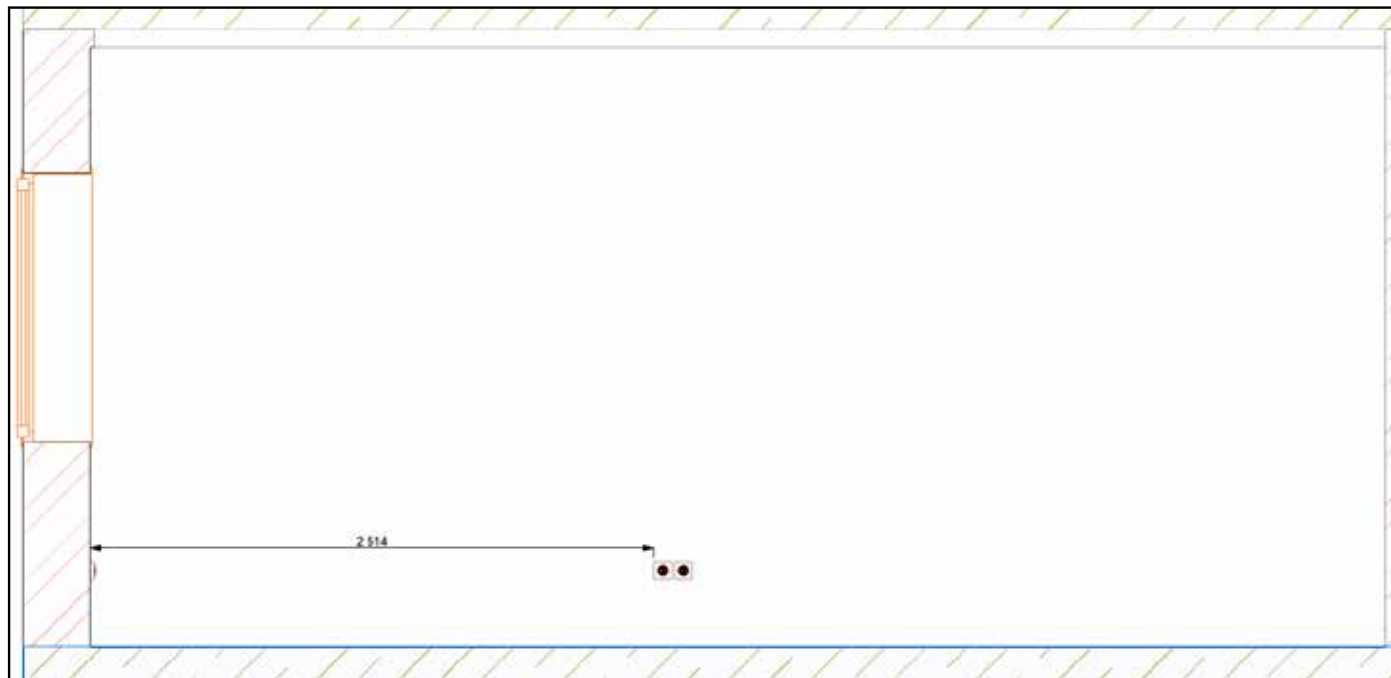
## Расположение розеток и выключателей



**розетки - 15**  
**выключатели - 4**  
**антенна - 1**

Е

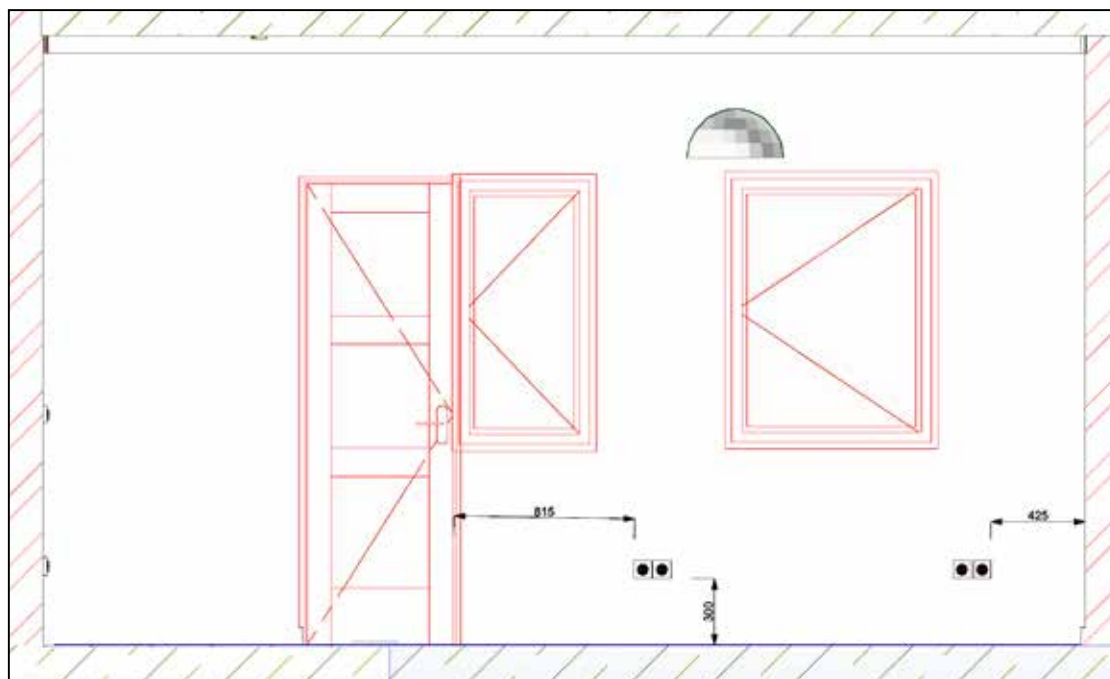
Ж



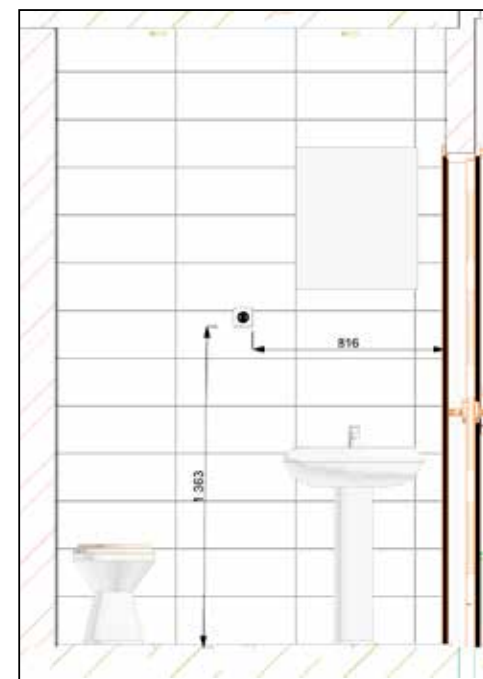
**Расположение  
розеток  
и выключателей**

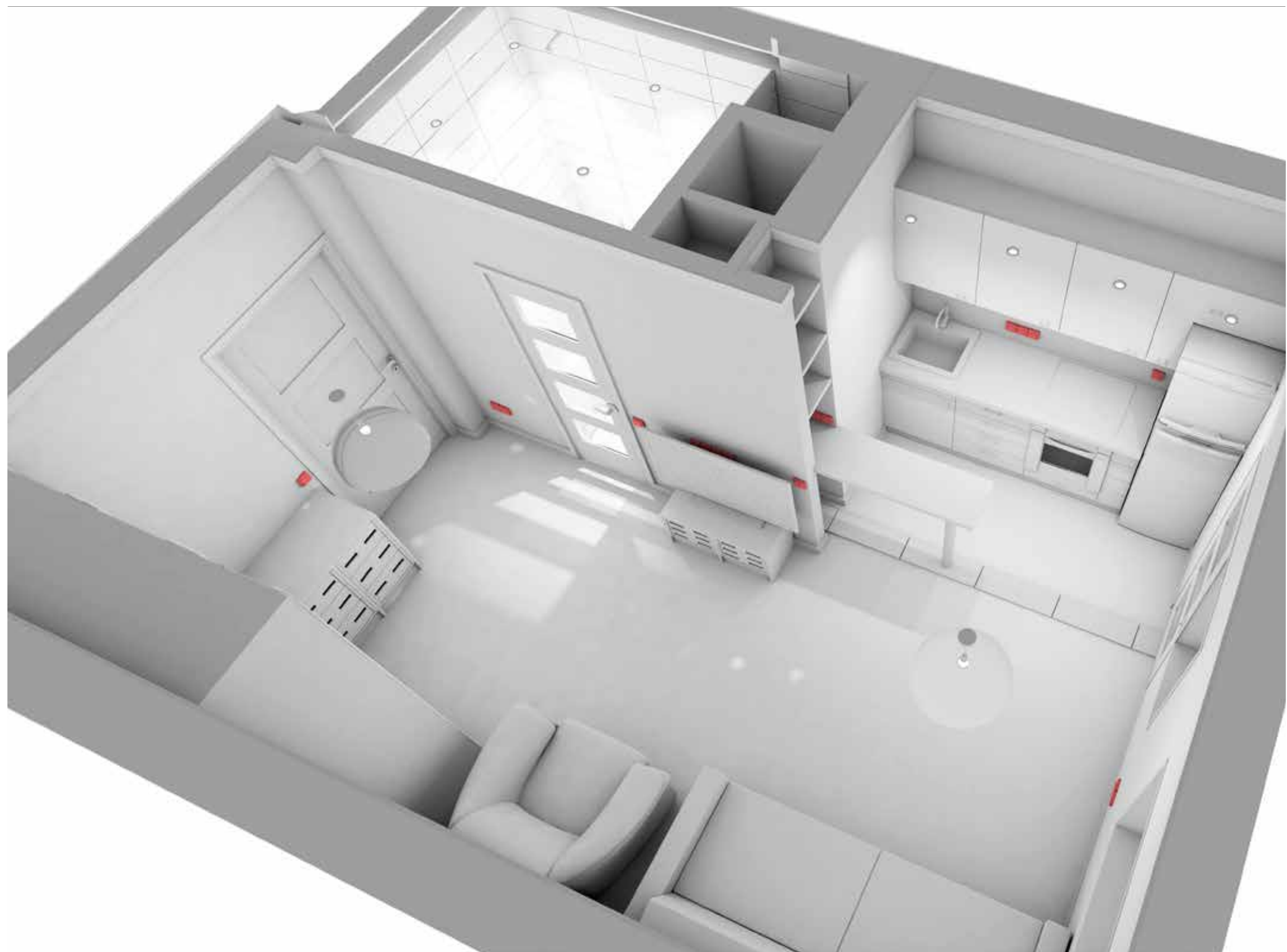
Д

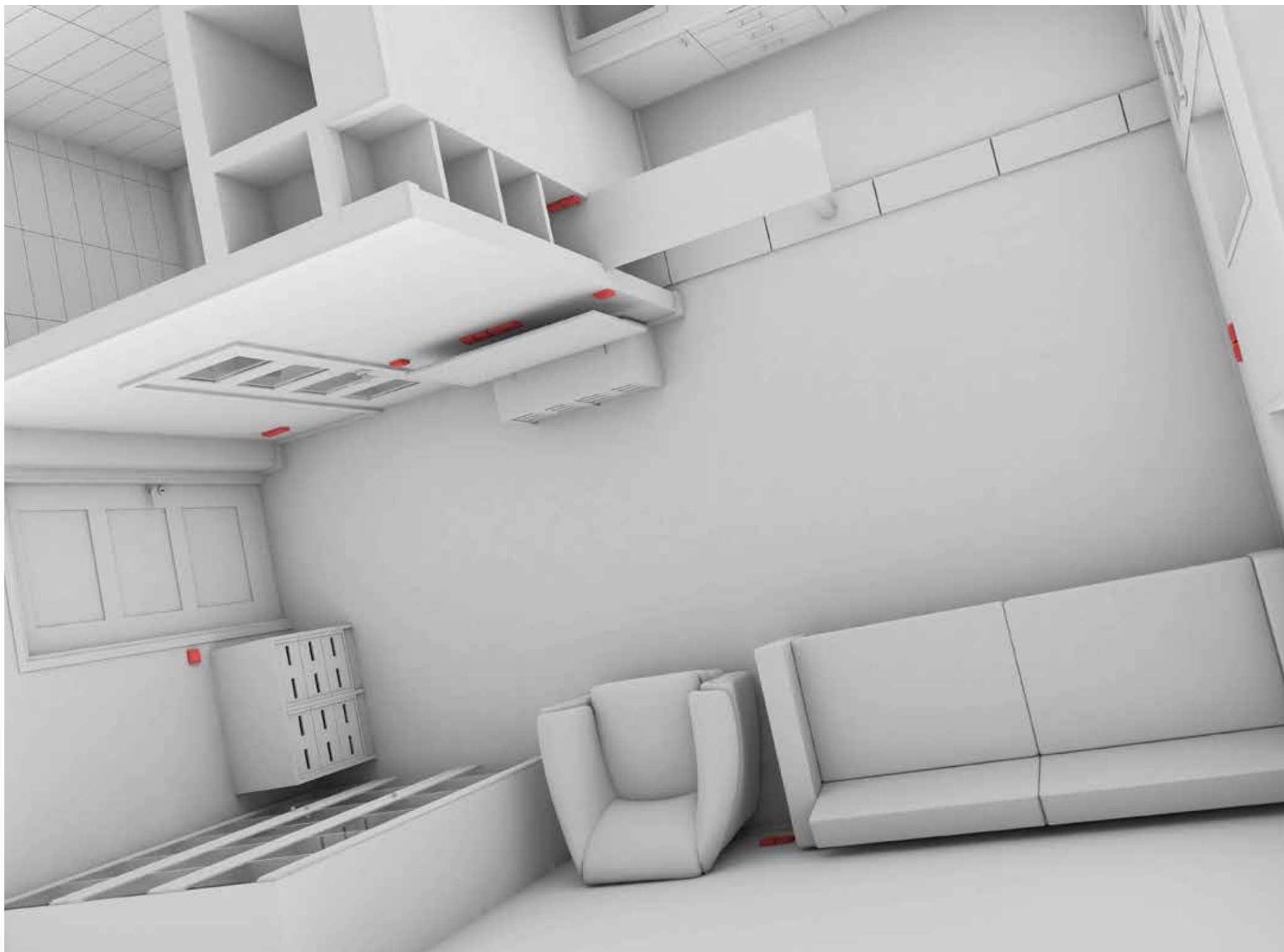
Е



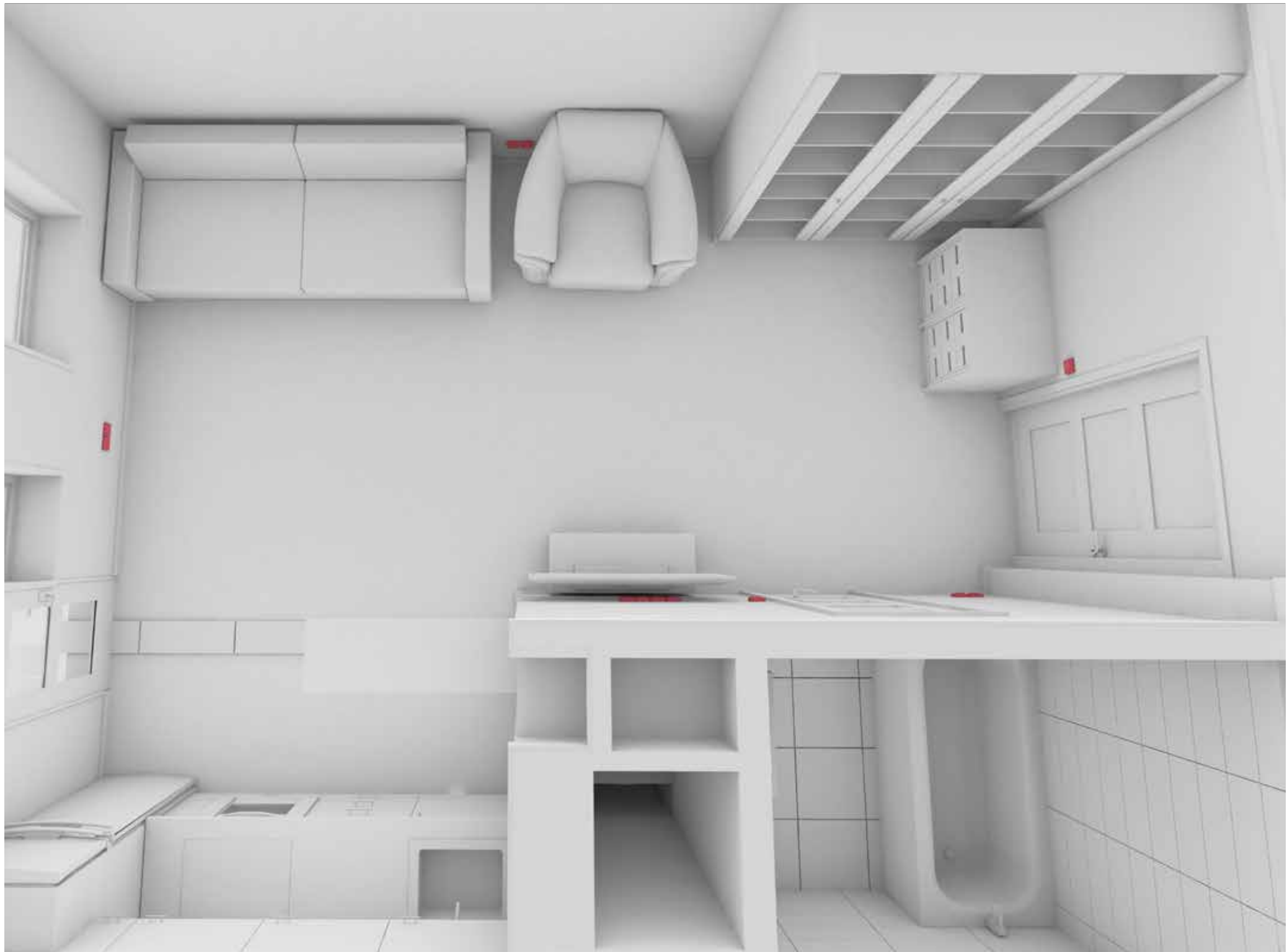
**Стена в ванной комнате**



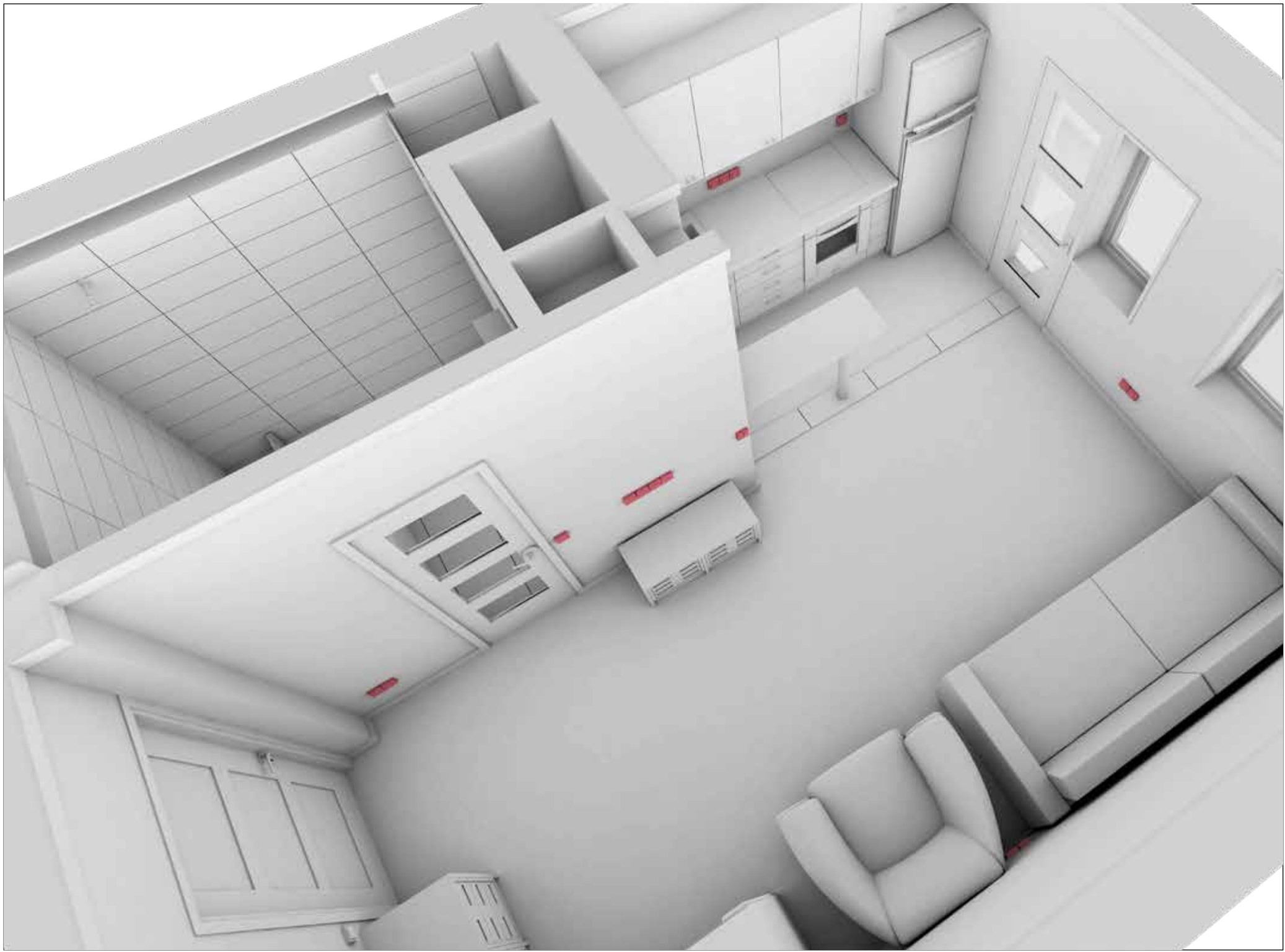


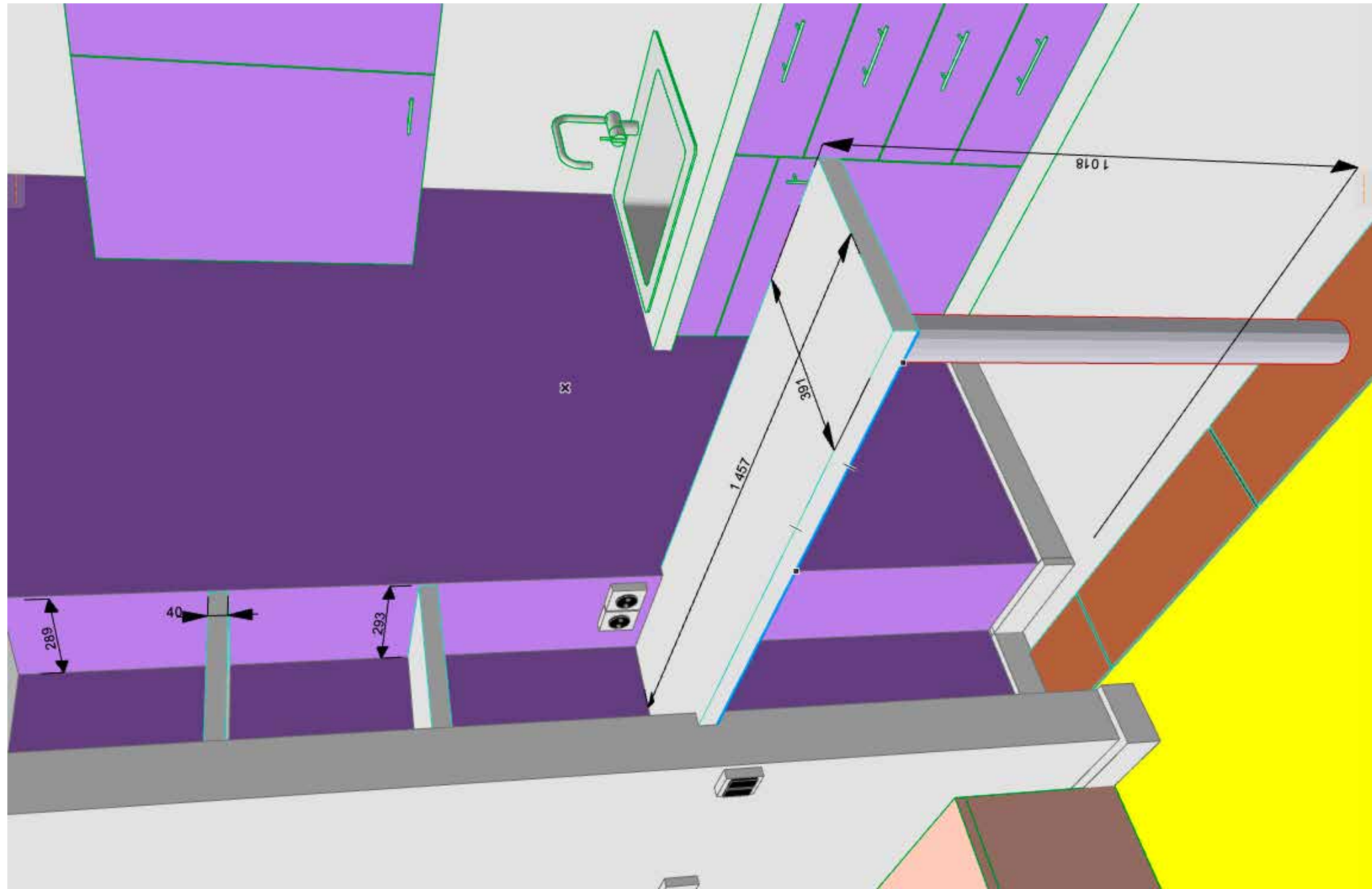


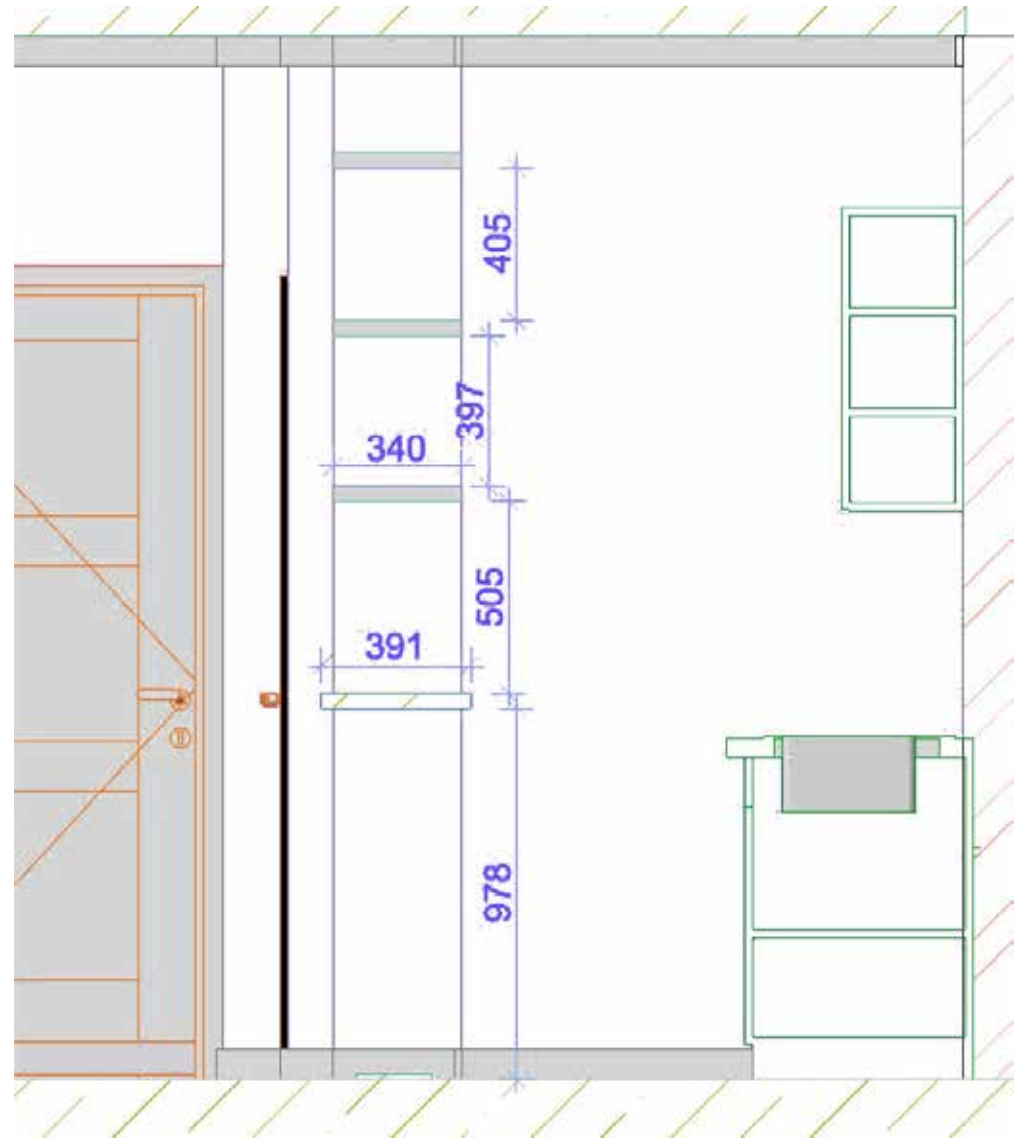
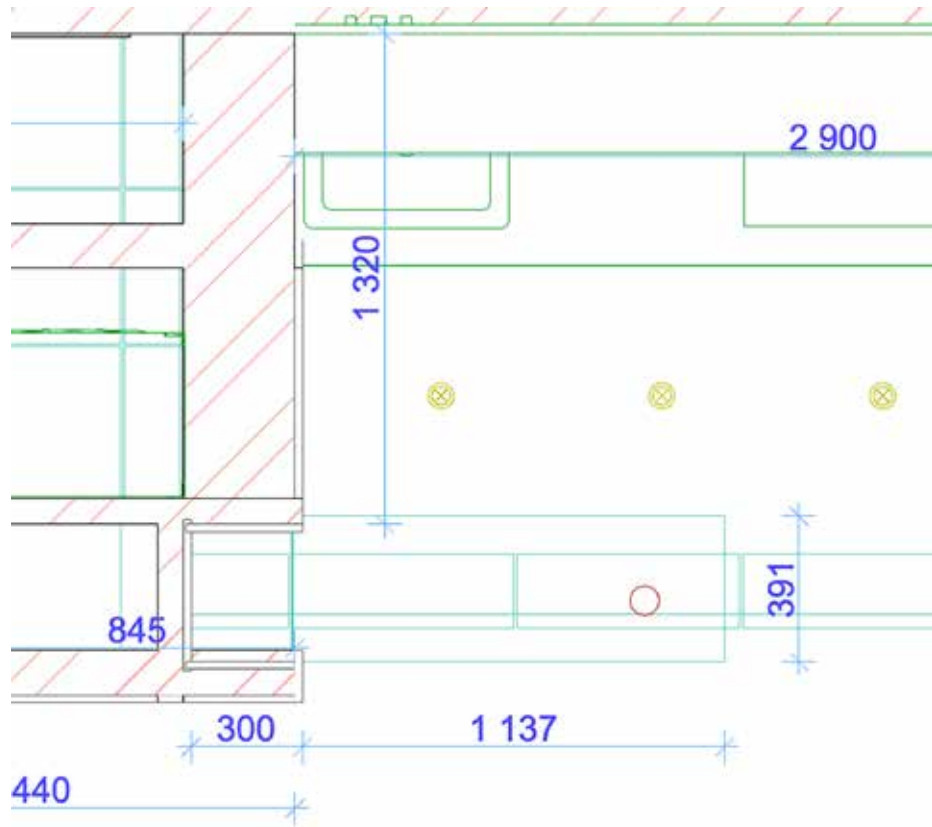


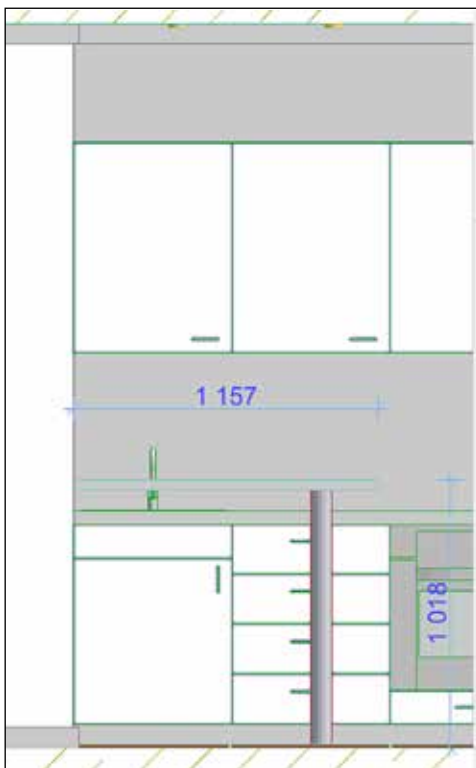
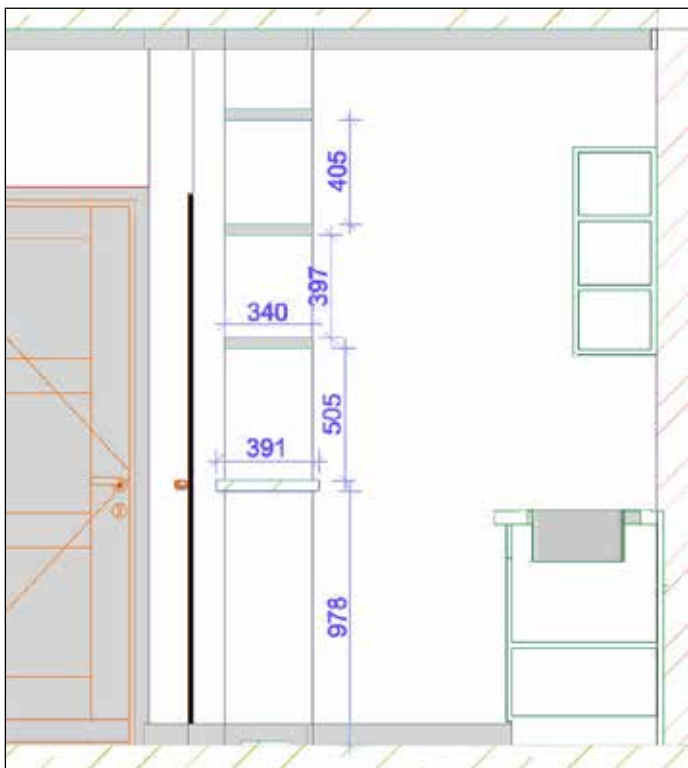












## Кухонный стол (барная стойка)

