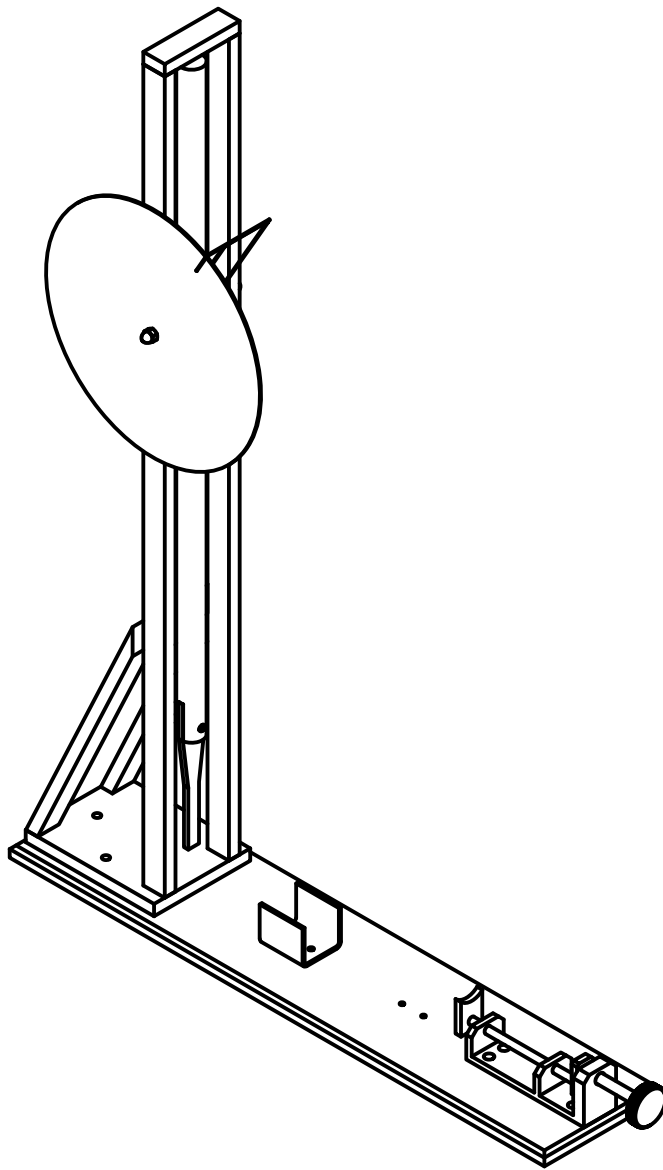
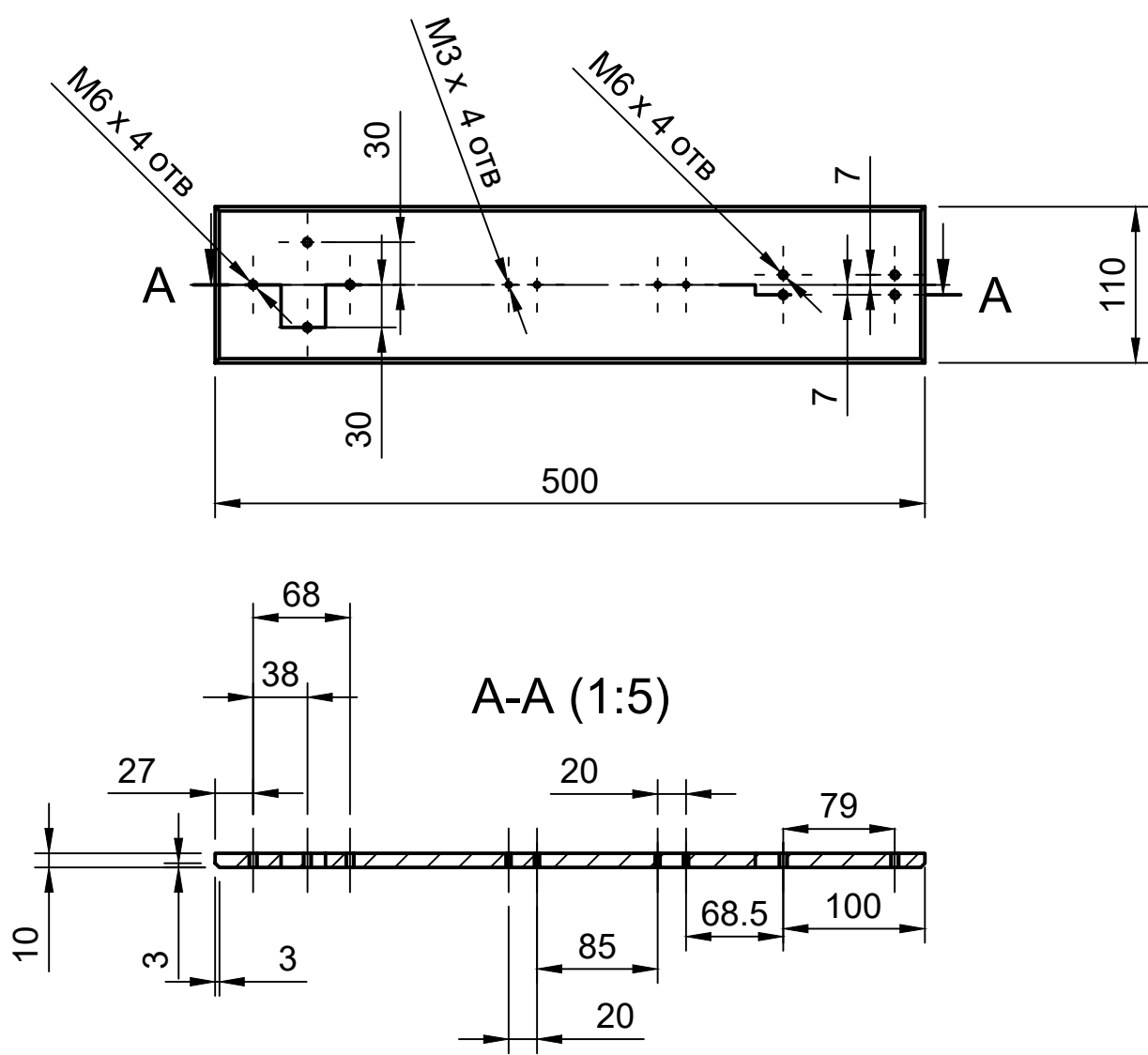


Dept.	Technical reference	Created by Standart Tehnology 18.02.2019	Approved by		
		Document type	Document status		
		Title Калибрующее устройство Общий вид	DWG No.		
		Rev.	Date of issue	Sheet 1/26	

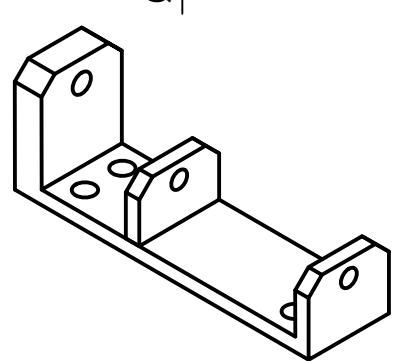
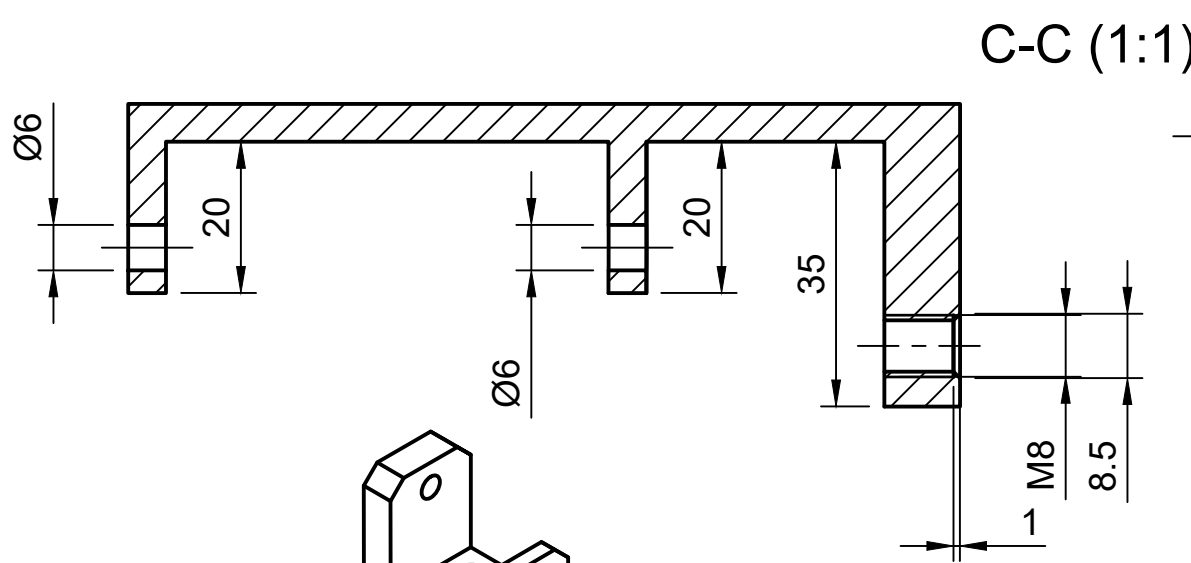
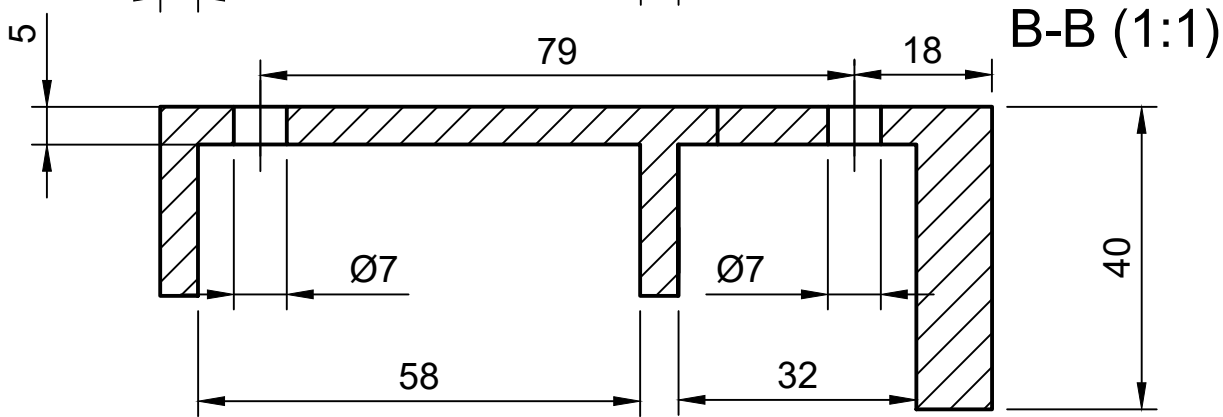
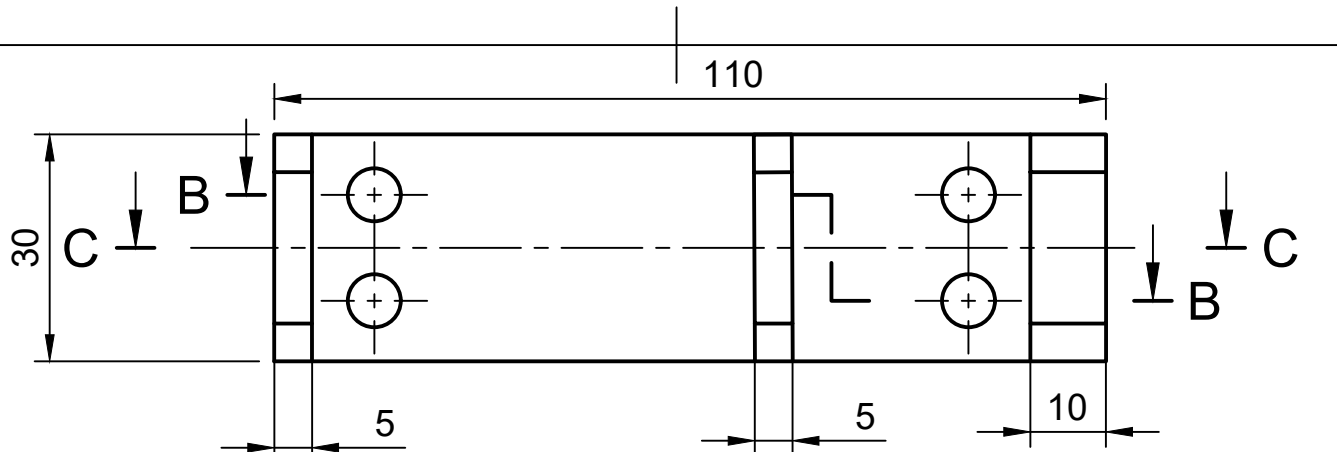


Dept.	Technical reference	Created by Standart Tehnology 18.02.2019	Approved by		
		Document type	Document status		
		Title Калибрующее устройство Общий вид	DWG No.		
			Rev.	Date of issue	Sheet 2/26

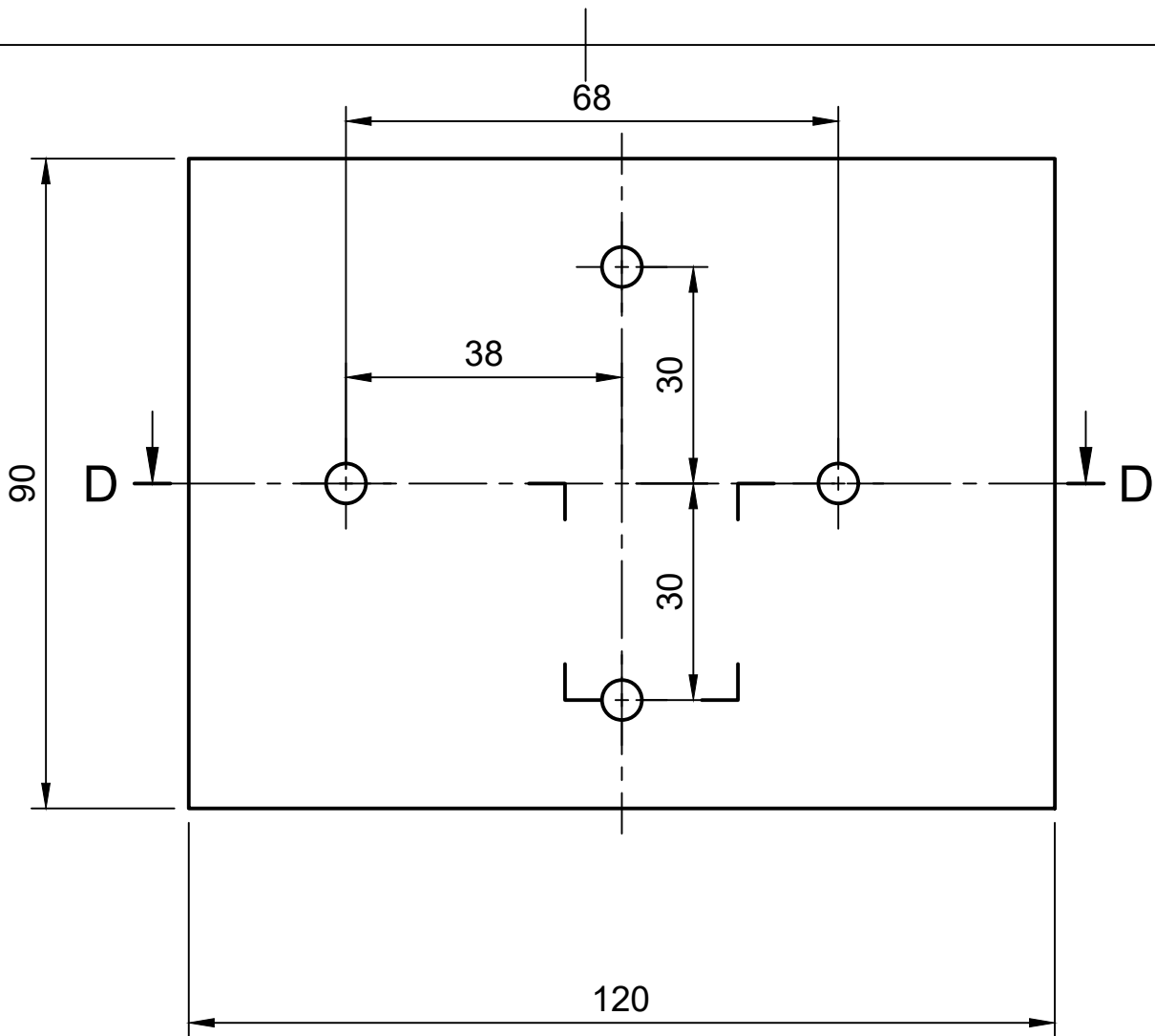


- 1) Наружняя поверхность без сколов и царапин, полировать не требуется
- 2) Пластина должна быть без изгибов по длине и ширине

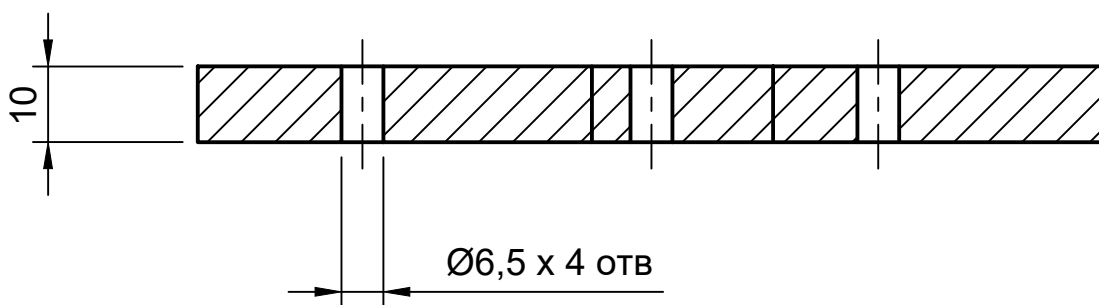
Dept.	Technical reference	Created by Standart Tehnology 18.02.2019	Approved by	
		Document type	Document status	
		Title Основание общее 1 шт СТЗ	DWG No.	
		Rev.	Date of issue	Sheet 3/26



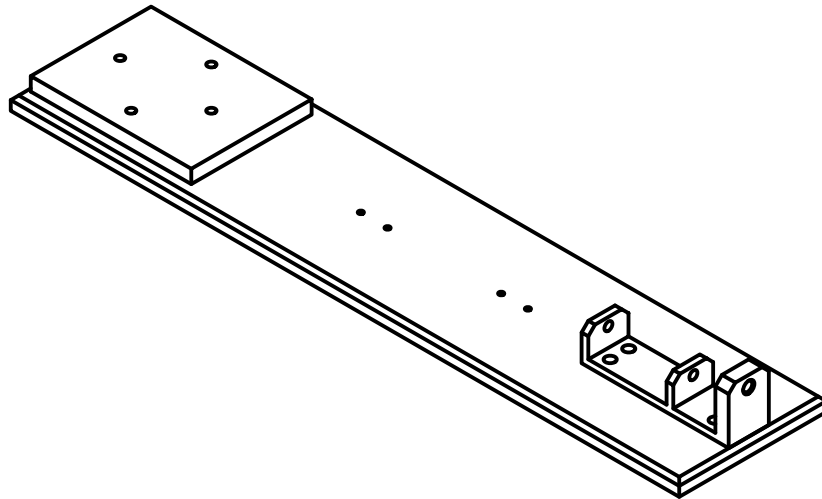
Dept.	Technical reference	Created by Standart Tehnology 18.02.2019	Approved by	
		Document type	Document status	
		Title Основание толкателя 1 шт СТЗ	DWG No.	
		Rev.	Date of issue	Sheet 4/26



D-D (1:1)



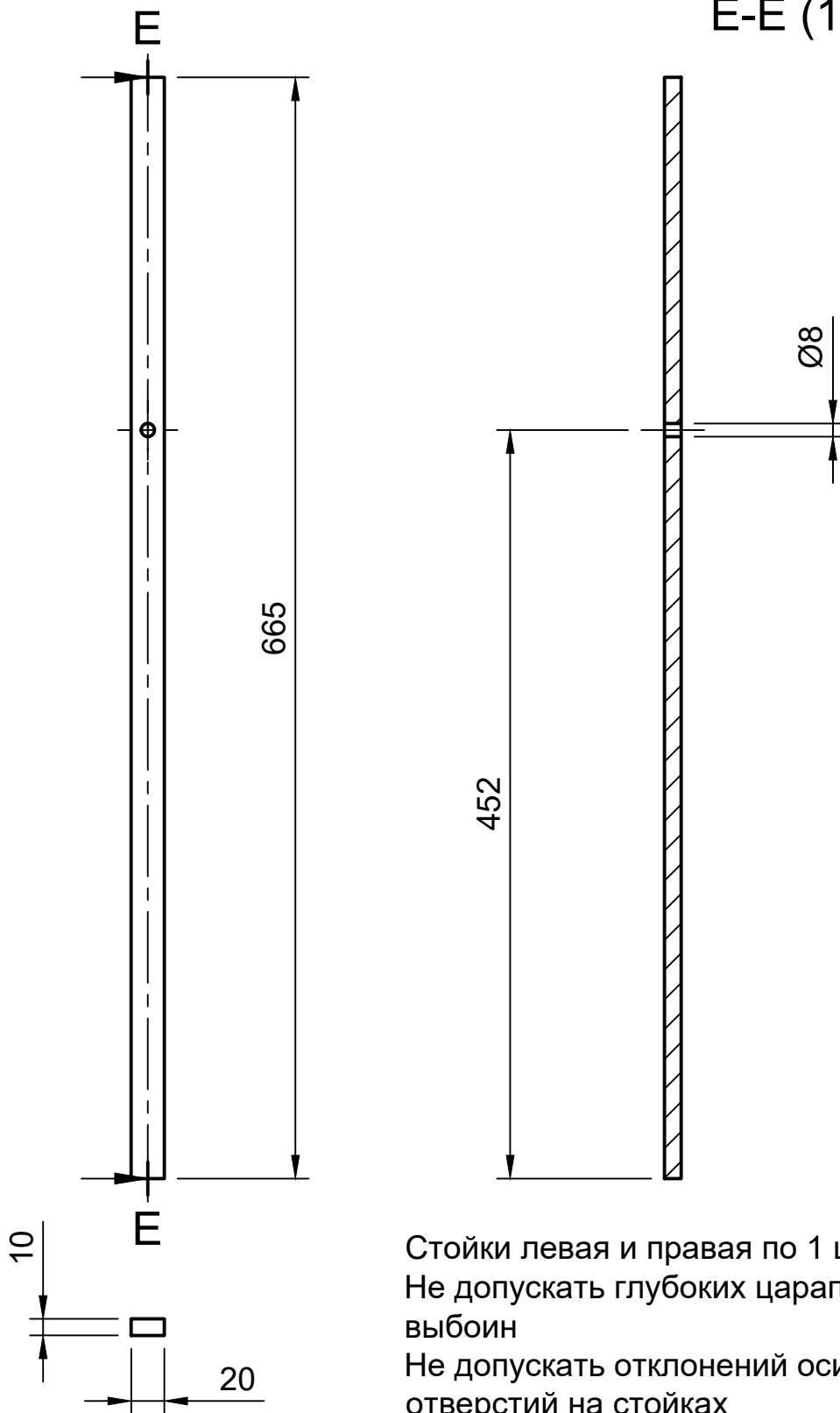
Dept.	Technical reference	Created by Standart Tehnology 18.02.2019	Approved by	
		Document type	Document status	
		Title Основаие опоры 1 шт СТ3	DWG No.	
		Rev.	Date of issue	Sheet 5/26



Сборка 1) Основание общее (стр 4)
 2) Основание толкателя (стр 5)
 3) Основание опоры (стр 6)

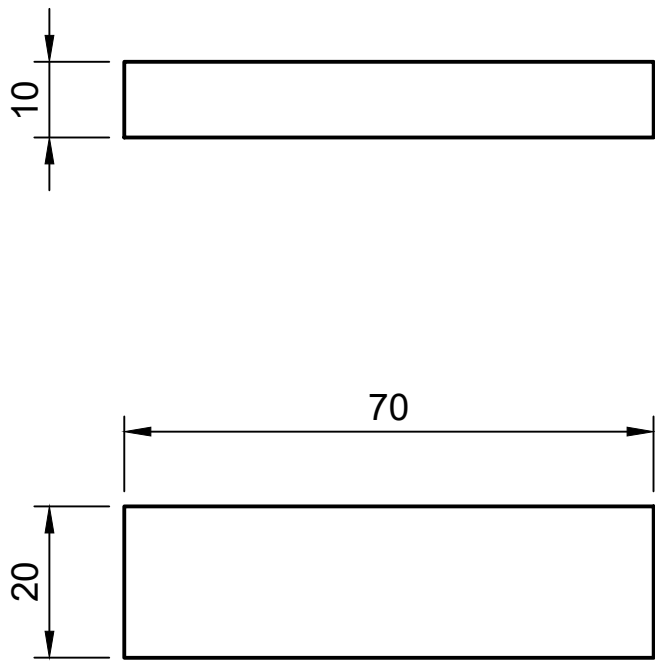
Dept.	Technical reference	Created by Standart Tehnology 18.02.2019	Approved by	
		Document type	Document status	
		Title Сборка №1	DWG No.	
		Rev.	Date of issue	Sheet 6/26

E-E (1:4)

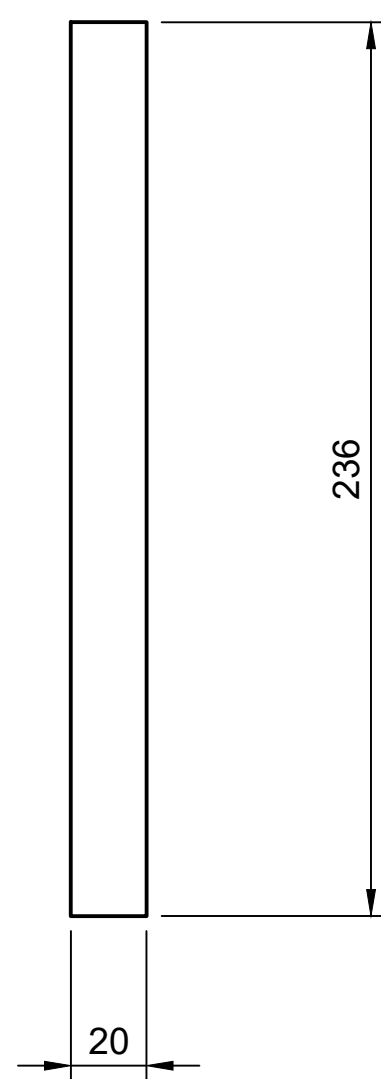
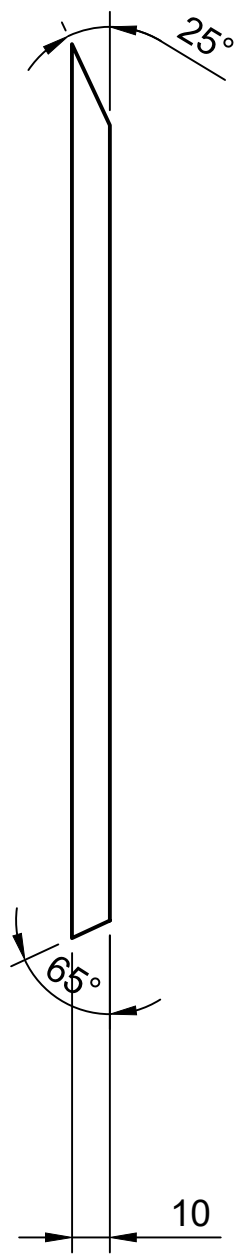


Стойки левая и правая по 1 шт каждой
 Не допускать глубоких царапин и выбоин
 Не допускать отклонений оси отверстий на стойках

Dept.	Technical reference	Created by Standart Tehnology 18.02.2019	Approved by	
		Document type	Document status	
		Title Стойки левая и правая 2 шт Ст3	DWG No.	
		Rev.	Date of issue	Sheet 7/26

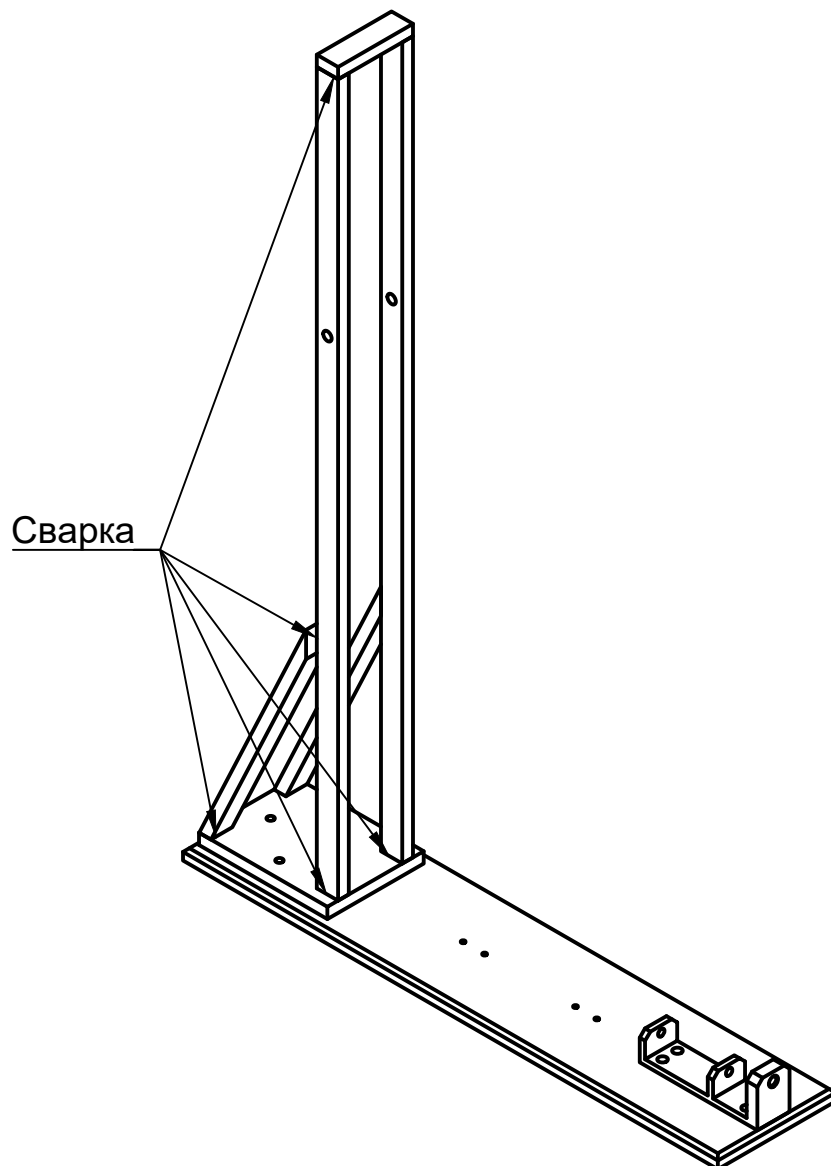


Dept.	Technical reference	Created by Standart Tehnology 18.02.2019	Approved by	
		Document type	Document status	
		Title Полка верхняя 1 шт Ст3	DWG No.	
		Rev.	Date of issue	Sheet 8/26



Упоры для стоек левый и правый по одной шт каждого

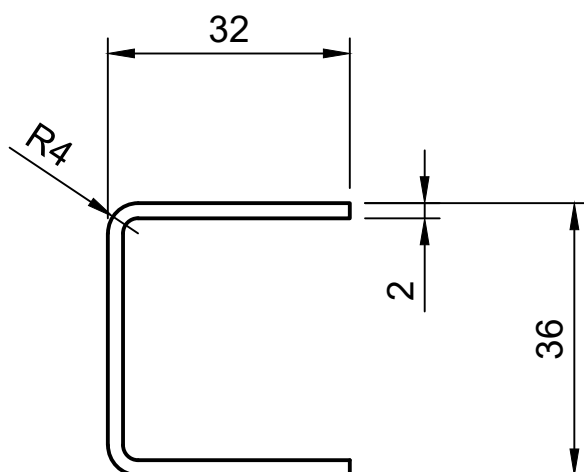
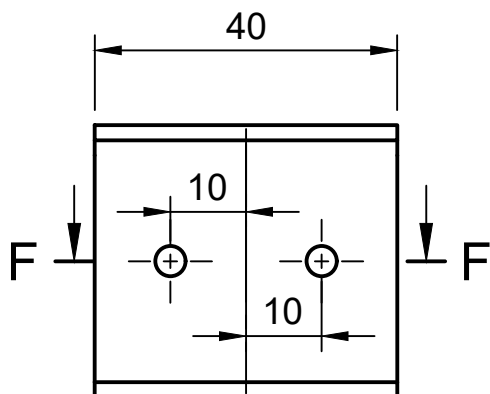
Dept.	Technical reference	Created by Standart Tehnology 18.02.2019	Approved by	
		Document type	Document status	
		Title Упоры стоек, левый и правый 2 шт Ст3	DWG No.	
		Rev.	Date of issue	Sheet 9/26



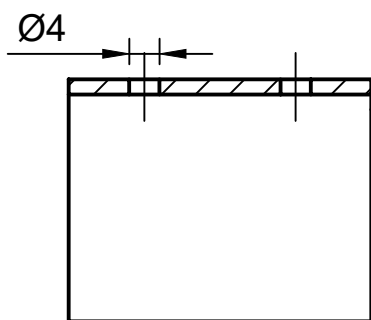
Следы сварки зачистить, после чистки цинковать

- Сборка №2
- 1) Сборка №1
 - 2) Стойки левая и правая
 - 3) Полка
 - 4) Упоры стоек

Dept.	Technical reference	Created by Standart Tehnology 18.02.2019	Approved by	
		Document type	Document status	
		Title Сборка №2	DWG No.	
		Rev.	Date of issue	Sheet 10/26

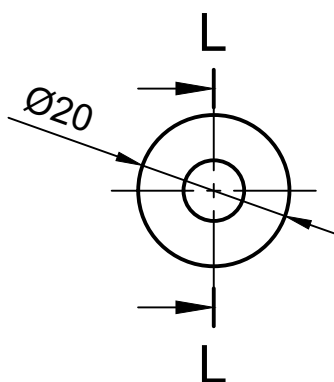


F-F (1:1)

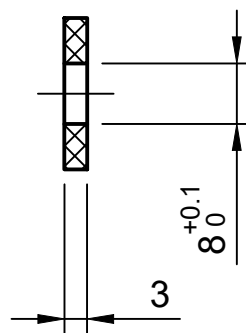


Согнуть пластину под углы 90°, радиус изгиба не важен

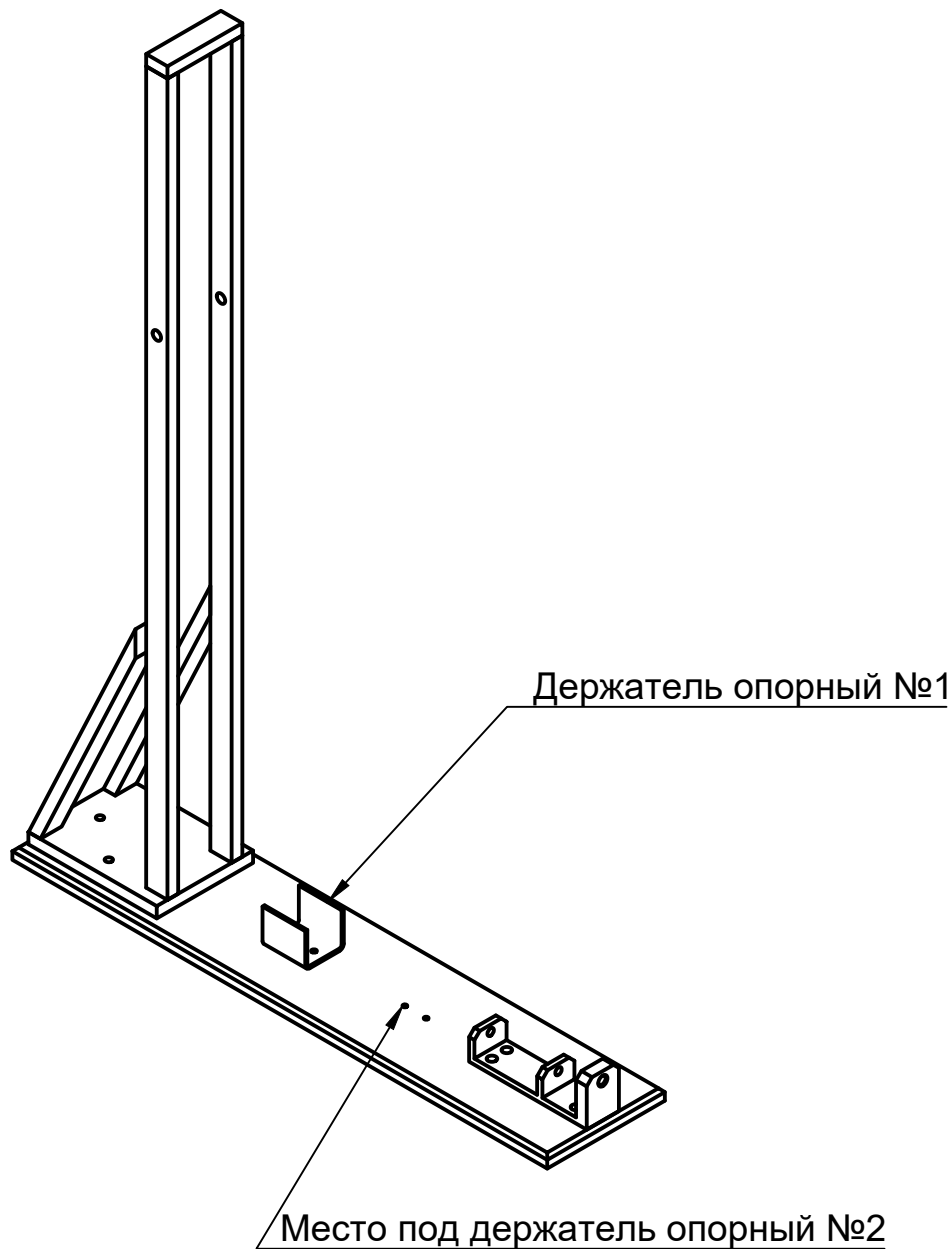
Dept.	Technical reference	Created by Standart Tehnology 18.02.2019	Approved by	
		Document type	Document status	
		Title Держатель упорный 2 шт Ст3	DWG No.	
		Rev.	Date of issue	Sheet 11/26



L-L (1:1)



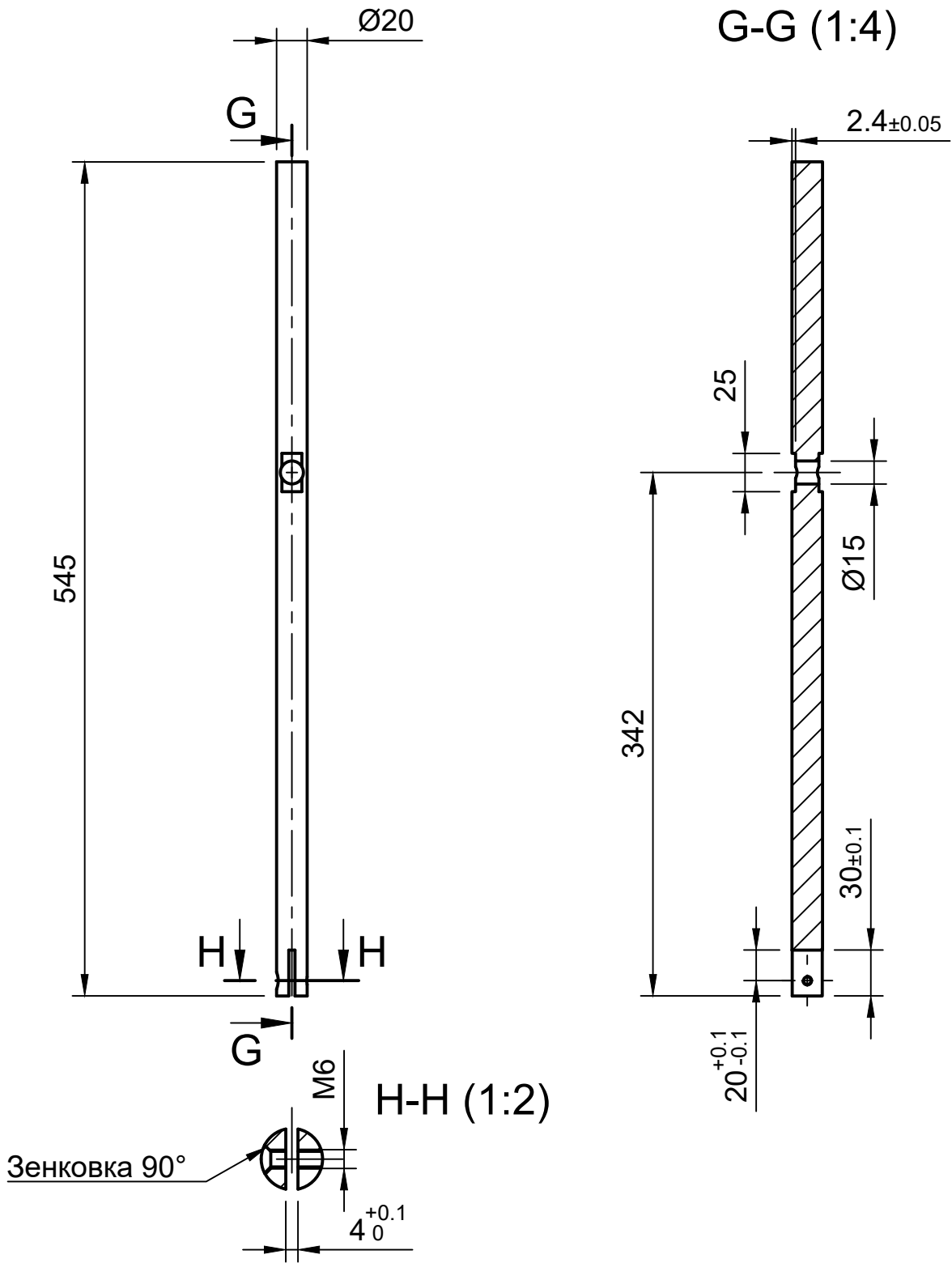
Dept.	Technical reference	Created by Standart Tehnology 18.02.2019	Approved by	
		Document type	Document status	
		Title Войлоковый круг 2 шт Войлок	DWG No.	
		Rev.	Date of issue	Sheet 12/26



Сборка №3

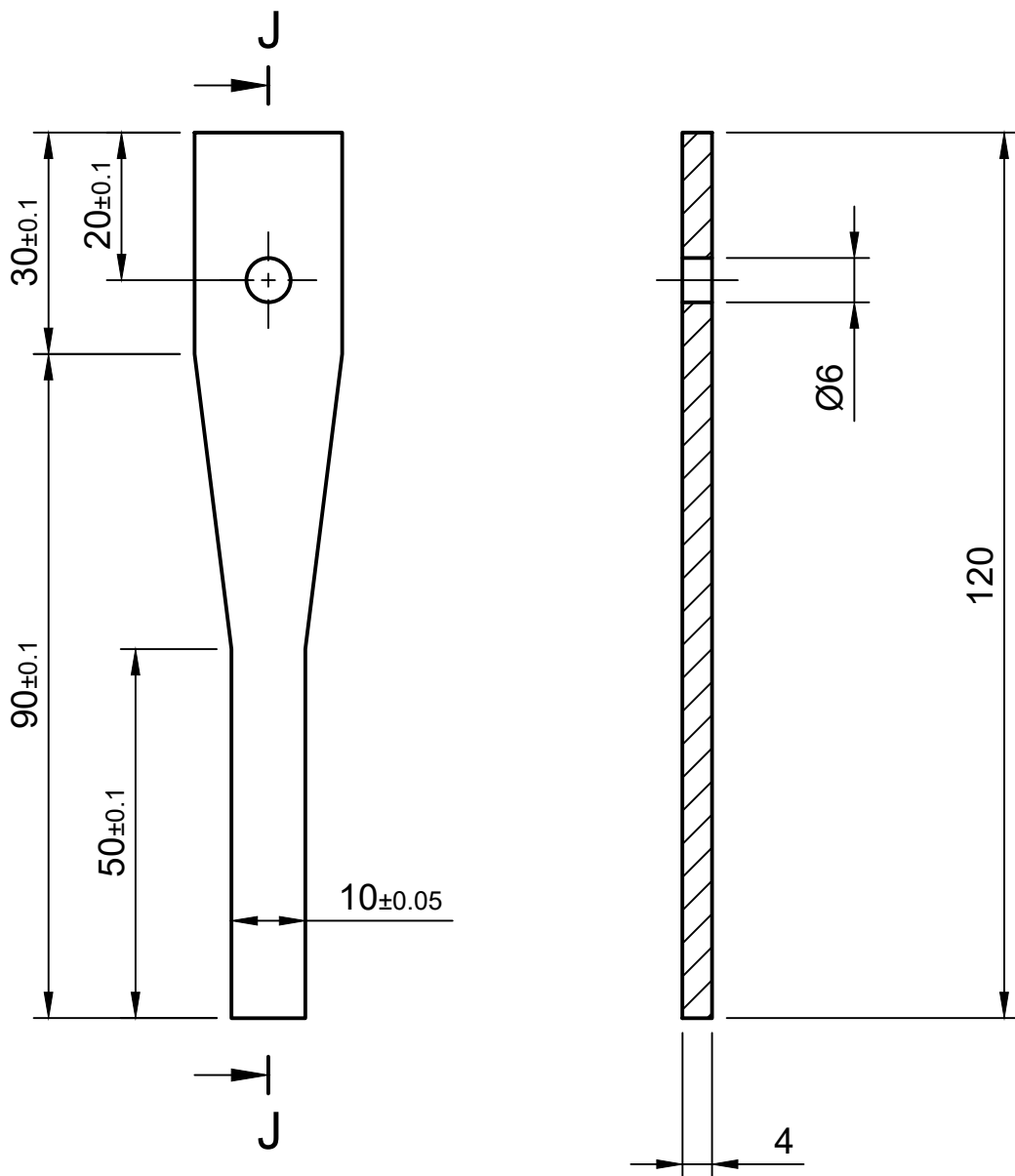
- 1) Сборка №2
- 2) Держатель опорный

Dept.	Technical reference	Created by Standart Tehnology 18.02.2019	Approved by	
		Document type	Document status	
		Title Сборка № 3	DWG No.	
		Rev.	Date of issue	Sheet 13/26



Dept.	Technical reference	Created by Standart Tehnology 18.02.2019	Approved by	
		Document type	Document status	
		Title Маятник 1 шт Нержавеющая сталь	DWG No.	
		Rev.	Date of issue	Sheet 14/26

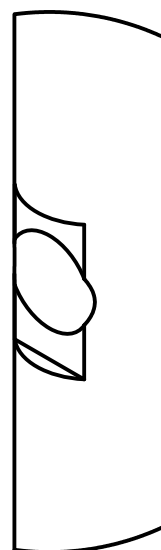
J-J (1:1)



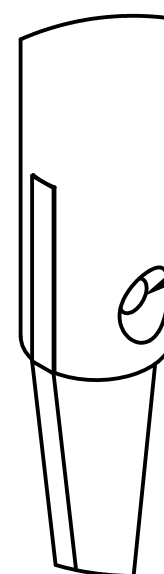
Любая пружинная сталь

Dept.	Technical reference	Created by Standart Tehnology 18.02.2019	Approved by	
		Document type	Document status	
		Title Пружина 1 шт Пружинная сталь	DWG No.	
		Rev.	Date of issue	Sheet 15/26

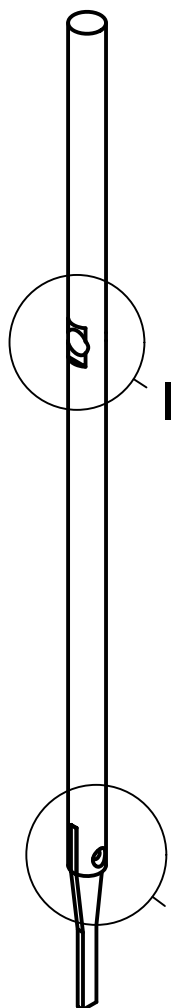
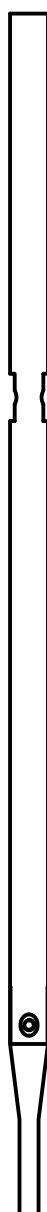
I (1:1)



K (1:1)



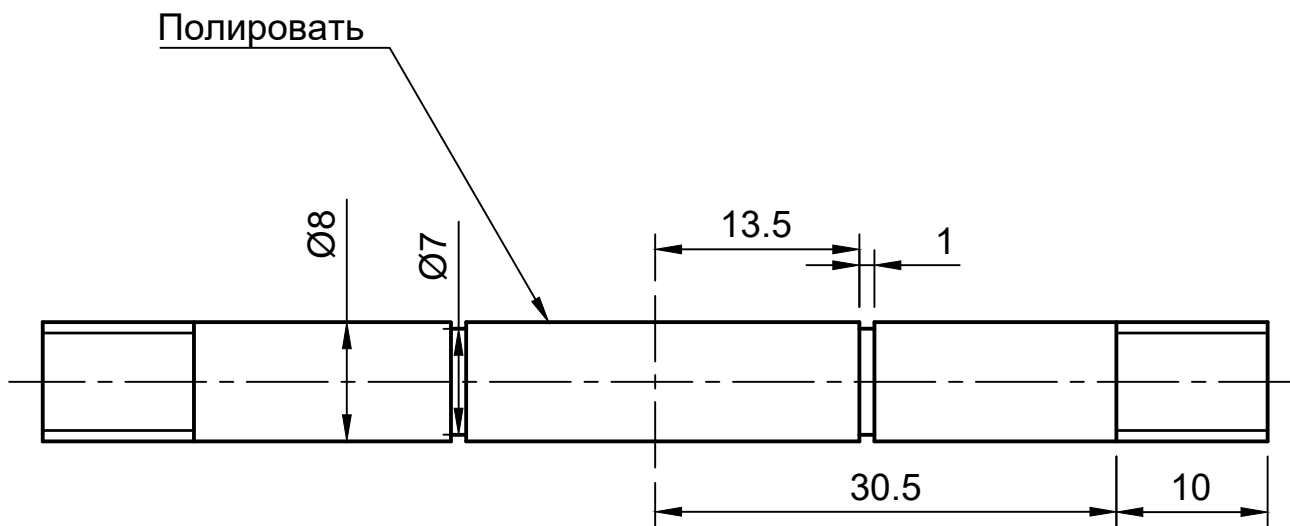
Винт М6



Сборка №4

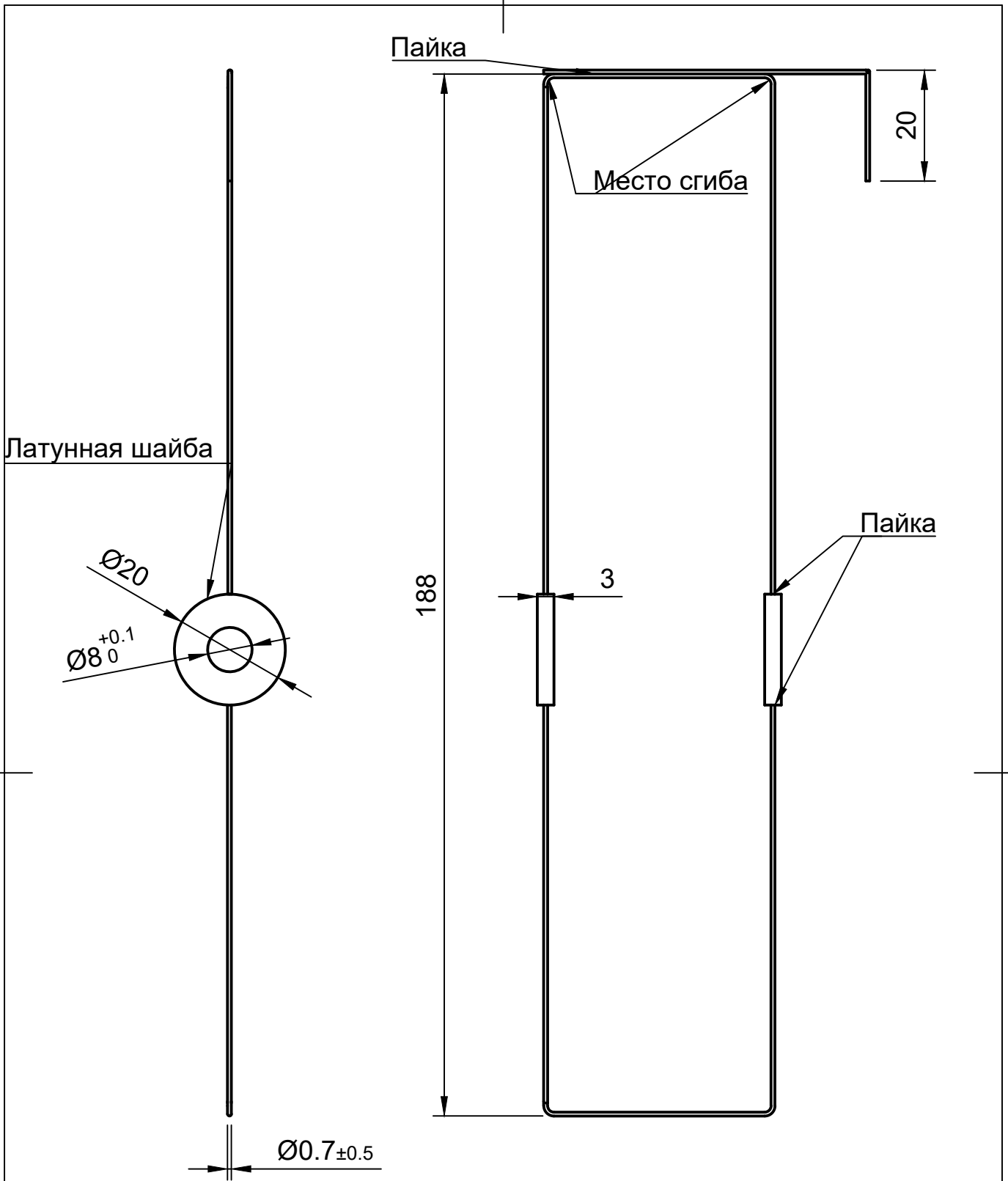
1) Маятник
2) Пружина

Dept.	Technical reference	Created by Standart Tehnology 18.02.2019	Approved by	
		Document type	Document status	
		Title Сборка № 4	DWG No.	
		Rev.	Date of issue	Sheet 16/26



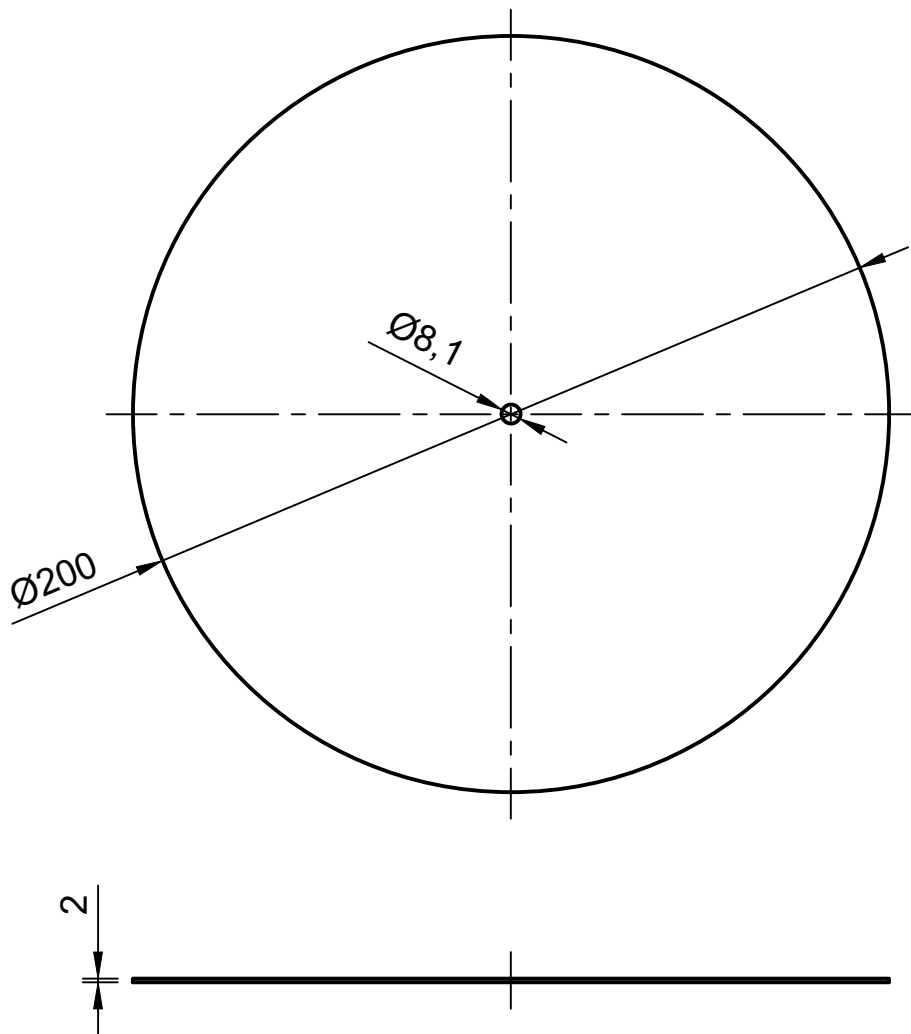
Отклонения размеров вдоль оси не более 0,01

Dept.	Technical reference	Created by Standart Tehnology 18.02.2019	Approved by	
		Document type	Document status	
		Title Осевой вал 1 шт Нержавеющая сталь	DWG No.	
		Rev.	Date of issue	Sheet 17/26

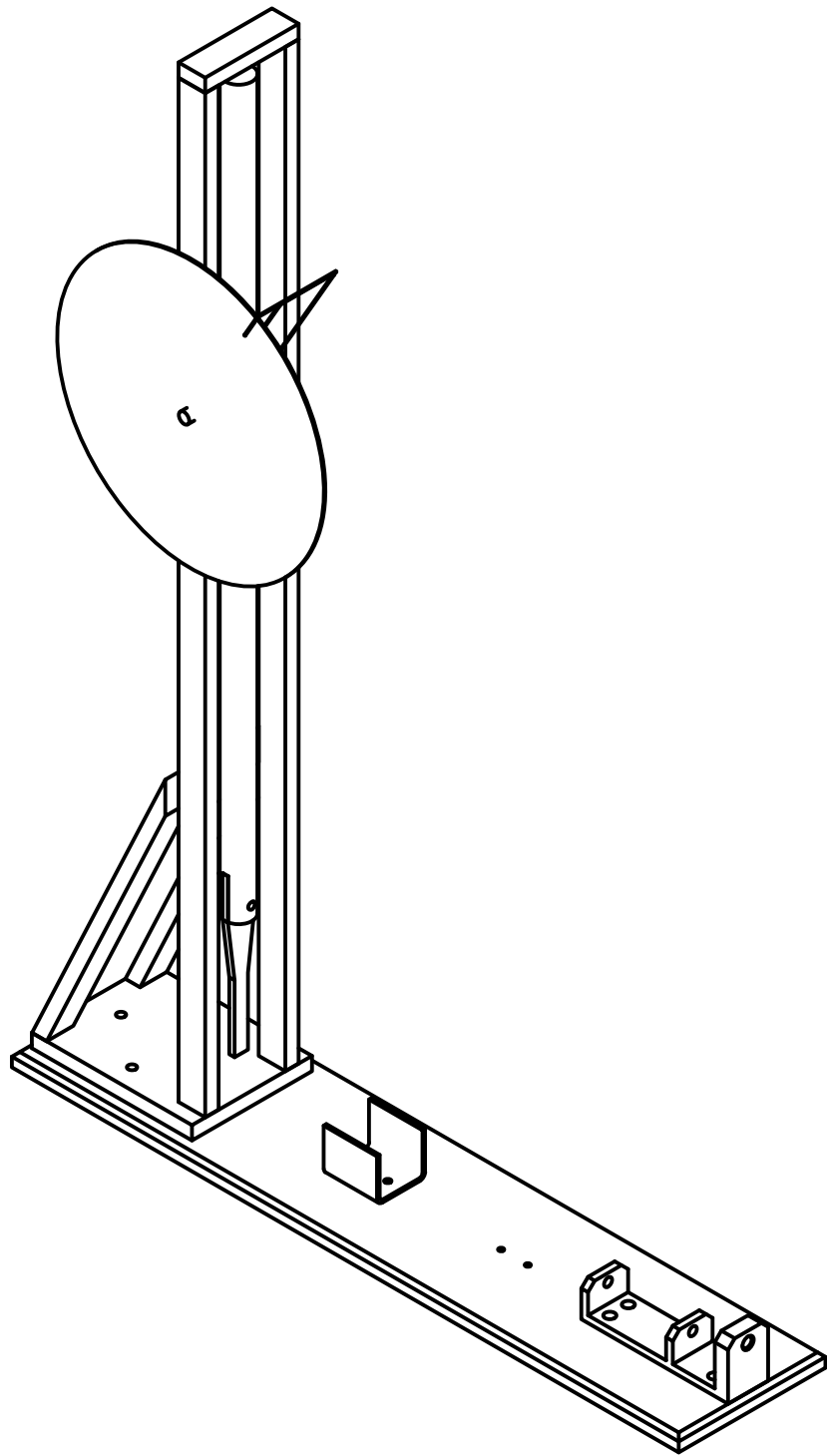


Проволочная стрелка, проволока жесткая

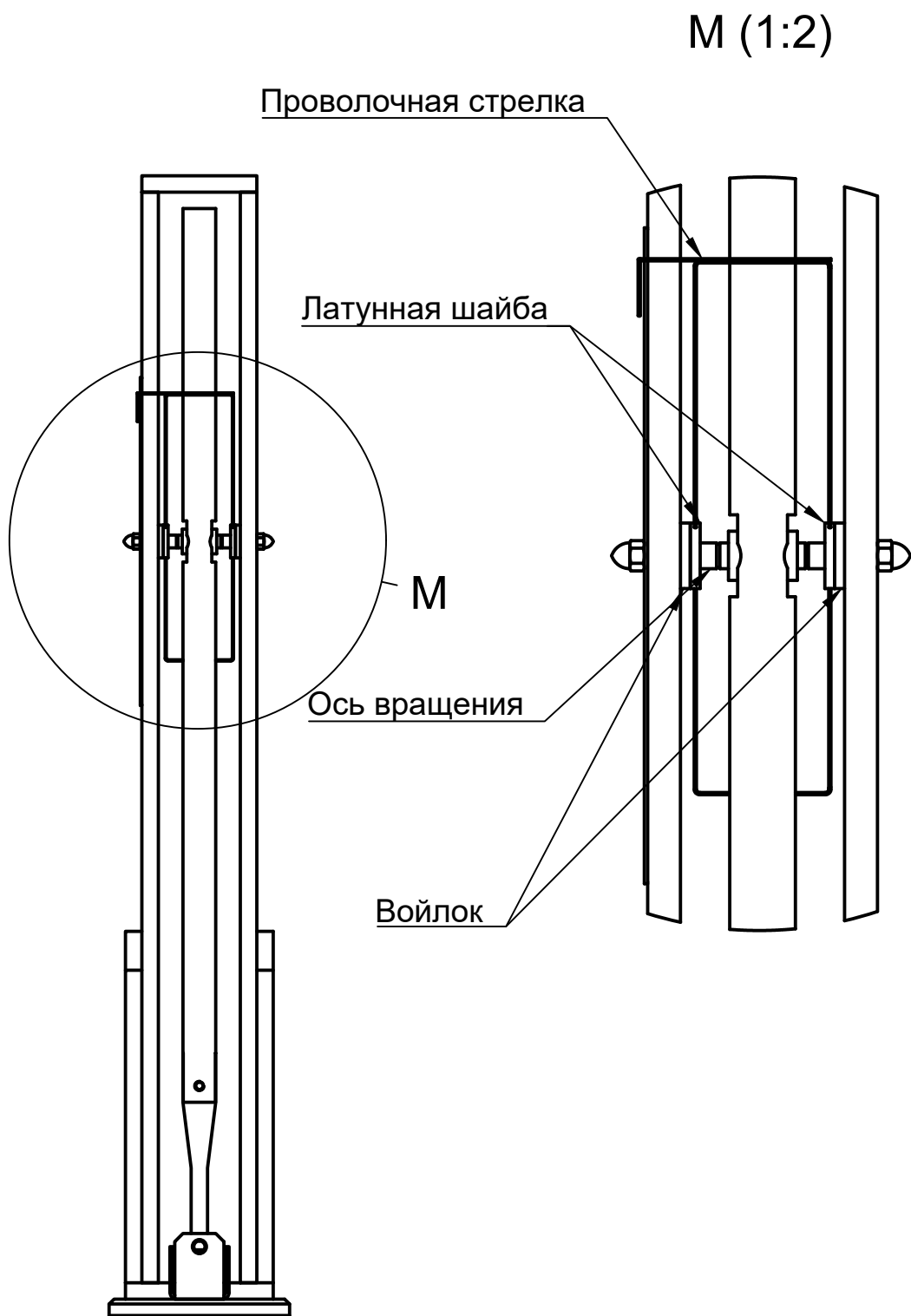
Dept.	Technical reference	Created by Standart Tehnology 18.02.2019	Approved by	
		Document type	Document status	
		Title Стрелка 1 шт Латунь, нерж. сталь	DWG No.	
		Rev.	Date of issue	Sheet 18/26



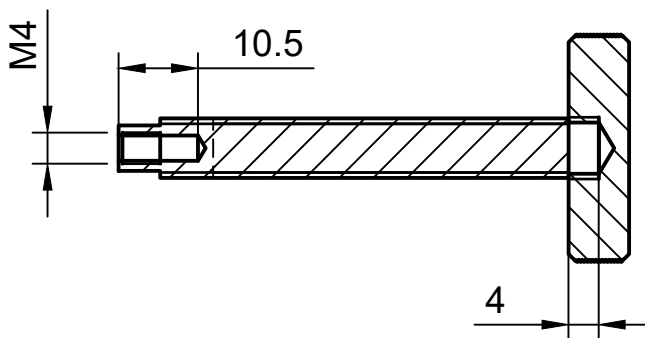
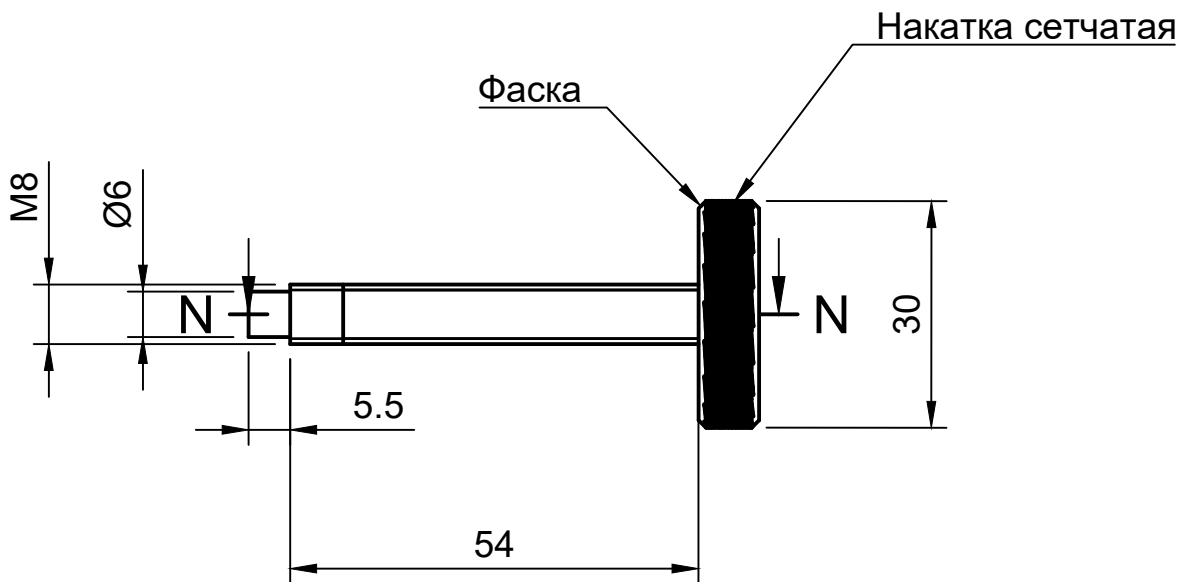
Dept.	Technical reference	Created by Standart Tehnology 18.02.2019	Approved by		
		Document type	Document status		
		Title Шкала 1 шт СТ3	DWG No.		
		Rev.	Date of issue	Sheet 19/26	



Dept.	Technical reference	Created by Standart Tehnology 18.02.2019	Approved by		
		Document type	Document status		
		Title Сборка№5 Вид 1	DWG No.		
		Rev.	Date of issue	Sheet 20/26	

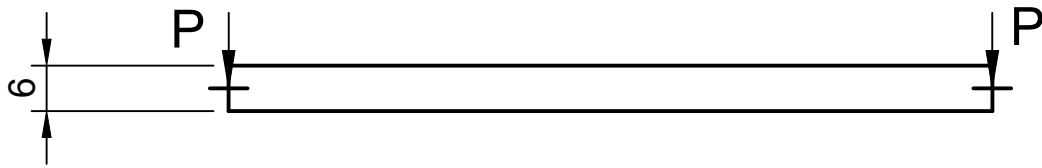


Dept.	Technical reference	Created by Standart Tehnology 18.02.2019	Approved by	
		Document type	Document status	
		Title Сборка №5 Вид 2	DWG No.	
		Rev.	Date of issue	Sheet 21/26

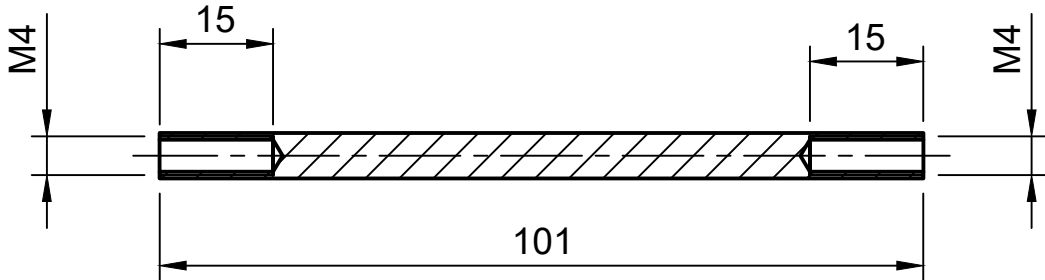


N-N (1:1)

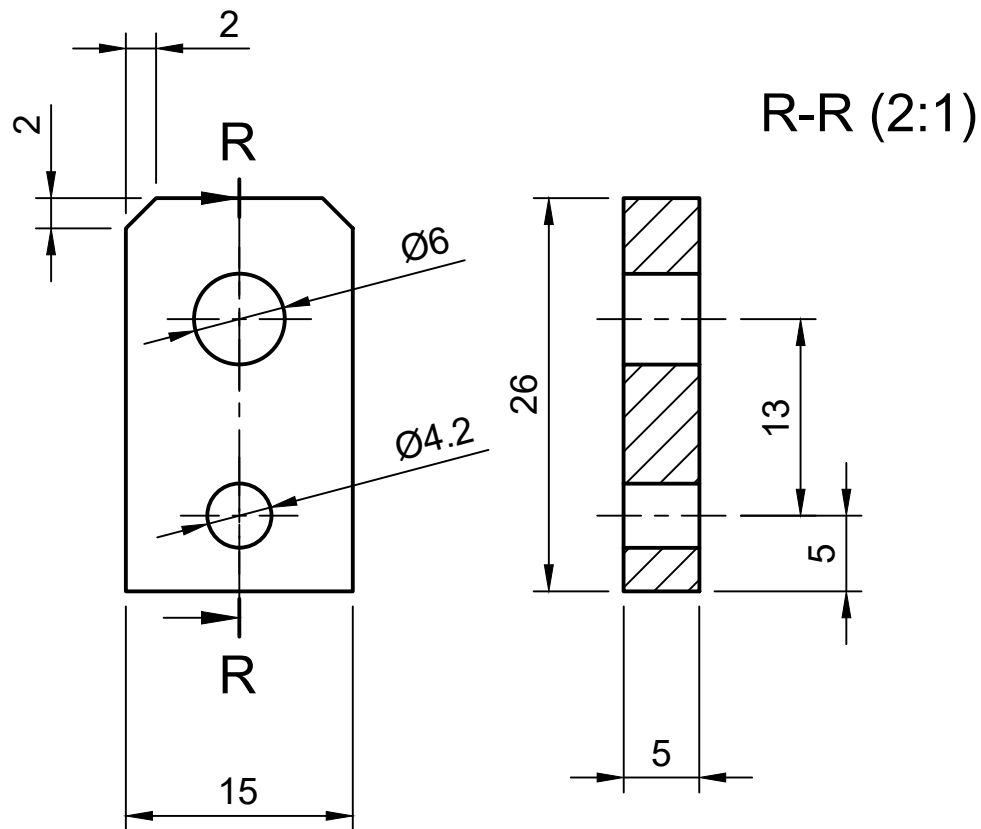
Dept.	Technical reference	Created by Standart Tehnology 18.02.2019	Approved by	
		Document type	Document status	
		Title Толкатель №1 Нержавеющая сталь 1 шт	DWG No.	
		Rev.	Date of issue	Sheet 22/26



P-P (1:1)

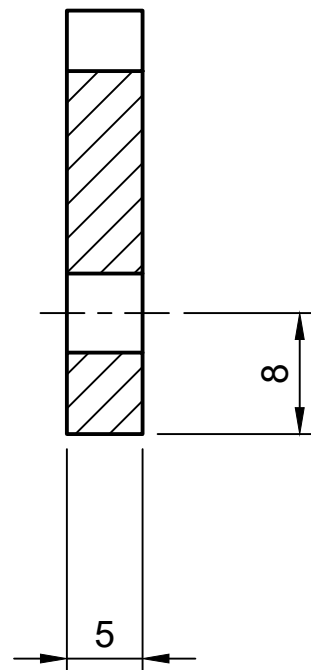
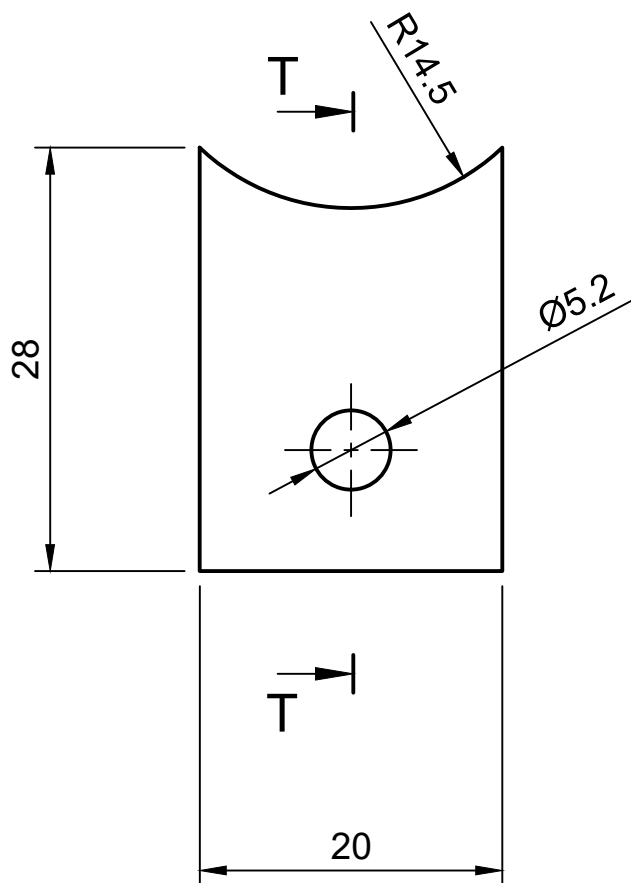


Dept.	Technical reference	Created by Standart Tehnology 18.02.2019	Approved by	
		Document type	Document status	
		Title Толкатель №2 Нержавеющая сталь 1 шт	DWG No.	
		Rev.	Date of issue	Sheet 23/26

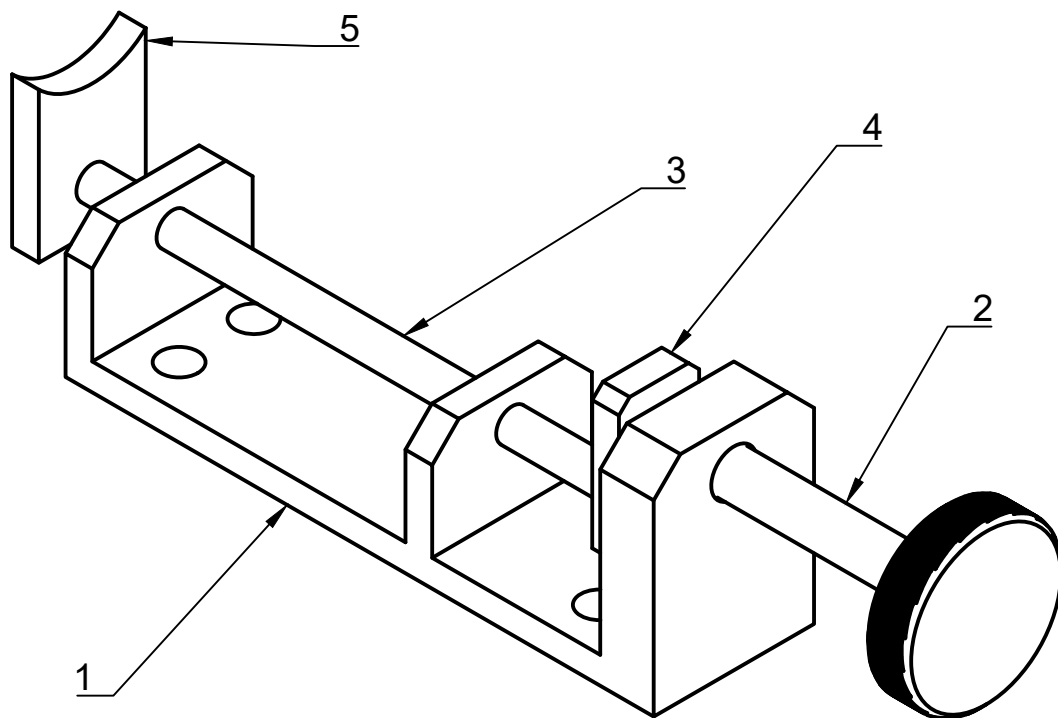


Dept.	Technical reference	Created by Standart Tehnology 18.02.2019	Approved by	
		Document type	Document status	
		Title Переходная пластина Нержавеющая сталь 1 шт	DWG No.	
		Rev.	Date of issue	Sheet 24/26

T-T (2:1)



Dept.	Technical reference	Created by Standart Tehnology 18.02.2019	Approved by	
		Document type	Document status	
		Title Толкающая пластина Нержавеющая сталь 1 шт	DWG No.	
		Rev.	Date of issue	Sheet 25/26



Сборка №6

- 1) Основание толкателя (стр 4)
- 2) Толкатель №1
- 3) Толкатель №2
- 4) Переходная пластина
- 5) Толкающая пластина

Dept.	Technical reference	Created by Standart Tehnology 18.02.2019	Approved by	
		Document type	Document status	
		Title Сборка № 6	DWG No.	
		Rev.	Date of issue	Sheet 26/26